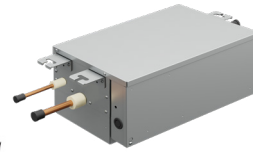


VRF SHRMu R410a: Single flow selector boxes

Toshiba have designed a new range of single & multi flow selector boxes as well as safety shut off valve boxes. They have been designed to increase both the flexibility of the system, but also to enable the system to comply with the requirements of IEC60335-2-40 and EN378. To enable this compliance, both the Flow Selector (F/S) and Shut Off Valve (SV) boxes have been fitted with isolation valves



Retail Price (interactive icons):



SHRMu
SUPER HEAT RECOVERY MULTI

Hi - Res Image

Flow Selector Unit	RBM-	YP1121FUVPE	YP2801FUVPE
Height x Width x Depth	mm	206 x 385 x 282	206 x 385 x 282
Weight	kg	10	10
Standard 2 Core Control Cable Max. Length	m	<300	<300
Standard 3 Core Power Cable Max. Length	m	<50	<50
Individual Power Supply	V/ph/Hz - A	220-240/1/50 - 6	220-240/1/50 - 6

Single Unit Connection For Flow Selector

MM*-UP***		007 to 012	015 to 018	024 to 030	072 to 096
Indoor Unit Side Gas Pipe	inch	3/8	1/2	5/8	7/8
Outdoor Unit Side Suction Gas Pipe	inch	5/8	5/8	5/8	7/8
Outdoor Unit Side Discharge Gas Pipe	inch	1/2	1/2	1/2	3/4
Max. Pipe Length To Indoor Unit	m	35	35	35	35

Multi Unit Connection For Flow Selector

		Less than 4 hp	6.4 hp or more Less than 10 hp
Indoor unit capacity code			
Indoor Unit Side Gas Pipe	inch	5/8	7/8
Outdoor Unit Side Suction Gas Pipe	inch	5/8	7/8
Outdoor Unit Side Discharge Gas Pipe	inch	1/2	3/4
Max. Connectible Indoor Units		6	16
Max. Total Pipe Length	m	50	50
Max. Height Difference Between Indoor Units	m	15	15

*All [Accessories](#) / [Controls](#)

Related items - YP1121FUVPE:

- [Full specification](#)
- [Dimensional drawing](#)
- [Wiring diagram](#)
- [Installation manual](#)



Related items - YP2801FUVPE:

- [Full specification](#)
- [Dimensional drawing](#)
- [Wiring diagram](#)
- [Installation manual](#)

