

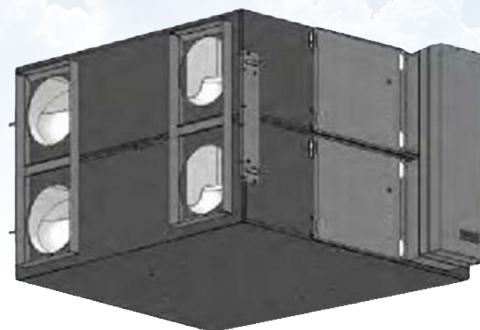
Toshiba Air Conditioning - Air-to-Air Heat Exchanger Data Sheet

VN-M2000HE1

Standard Heat Exchanger

Features

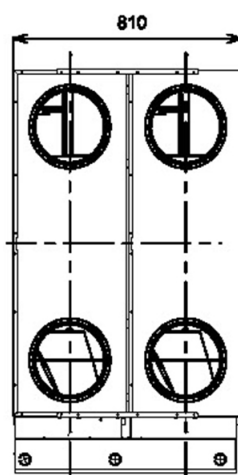
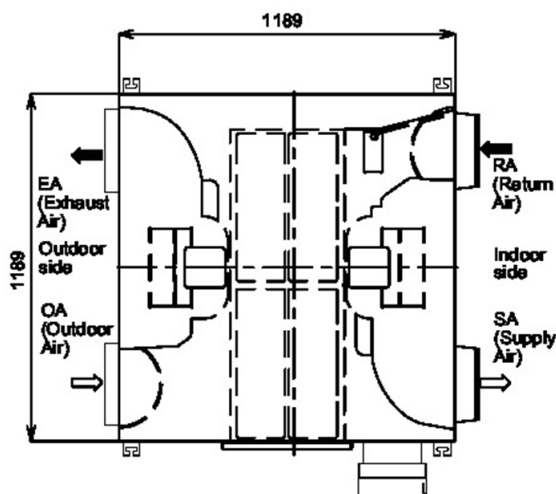
- Complies with the ENTR LOT 6 Tier 2 regulations
- DC motor for reduced power consumption
- Increased efficiency
- Compatible with standard TCC-Link controls



Technical Data

Model reference		VN-M2000HE1
Temperature exchange efficiency (EH/H/L)	%	73.5/73.5/77.5
Enthalpy exchange efficiency - cooling (EH/H/L)	%	60.5/60.5/65.5
Enthalpy exchange efficiency - heating (EH/H/L)	%	68.5/68.5/72.0
Sound pressure (EH/H/L)	dB(A)	41.5/40.5/36.5
Power consumption (EH/H/L)	W	780/680/380
Maximum running current	A	5.08
Suggested fuse size	A	10
External static pressure (EH/H/L)	Pa	105/80/70
Fan air flow (EH/H/L)	l/s	555/555/388
Dimensions (H x W x D)	inch	1189 x 1189 x 810
Weight	kg	126
Power supply	V-ph-Hz	220/240-1-50
Duct diameter	mm	250
Operating range - around unit	°C	-10 to 40, RH ≤ 80%
Operating range - outdoor air	°C	-15 to 43, RH ≤ 80%
Operating range - return air	°C	5 to 40, RH ≤ 80%

Dimensional Drawings



Cool Designs Ltd

Raising the Standards in Air Conditioning Distribution

www.cdtweb.info

