

## Toshiba Air Conditioning Data Sheet

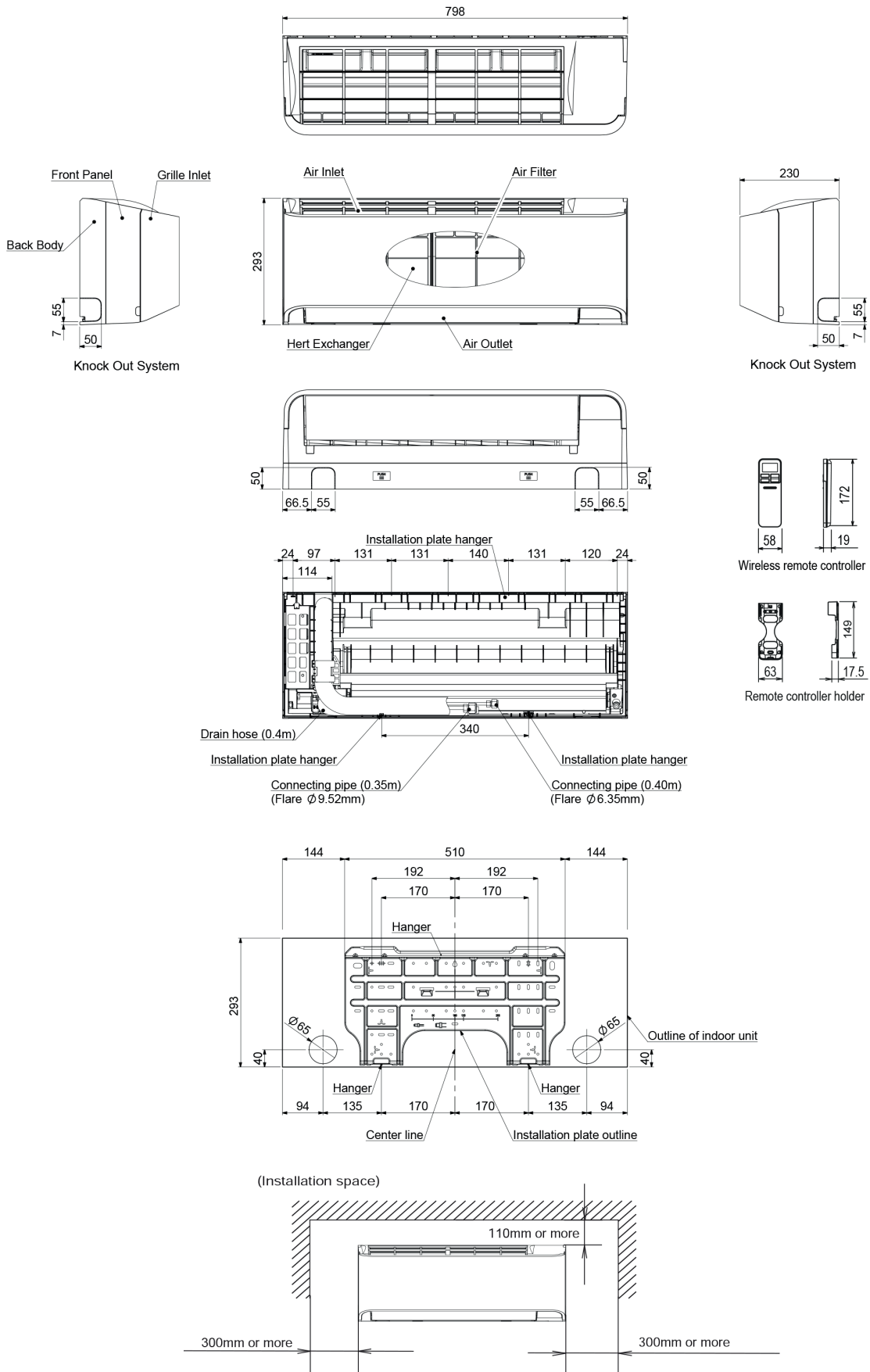
MMK-AP0057HP-E  
VRF WALL MMK 7 Series



Model Reference		MMK-AP0057HP-E	
Capacity Code		hp	0.6
Nominal	Cooling Capacity	kW	1.7
	Heating Capacity	kW	1.9
UK	Cooling Total / Sensible	kW	1.5/1.4
	Heating	kW	1.30
Electrical	Power Input	kW	0.013
	Run Current	A	0.14
	Start Current	A	0.2
Airflow	High - Medium - Low	l/s	124 - 103 - 75
	High - Medium - Low	m <sup>3</sup> /h	445 - 370 - 270
Sound	Pressure: High - Medium - Low	dB(A)	33 - 29 - 25
	Power: High - Medium - Low	dB(A)	48 - 44 - 40
Dimensions	Height x Width x Depth	mm	293x798x230
	Weight	kg	11
Pipe Connection	Flare Connections (gas - liquid)	inch	3/8 - 1/4
	Drain Pipe Connection OD/ID	mm	16/14
Power Supply	Suggested Fuse Size	V/ph/Hz-A	220-240/1/50-5
Remote Controller			WH-TA09NE (I/R)

\* Waiting for published data

# TOSHIBA



Note : All dimensions are in mm.