

## Toshiba Air Conditioning - Estia Split Data Sheet

### HWS-1405XWHT6-E Estia Split - Air-to-Water Heat Pump



#### Features

- High energy efficiency providing enhanced energy savings
- Quick and easy to install
- Large screen remote controller - simple, intuitive and easy to use
- Best in class performances

#### Hydro Unit Performance Data

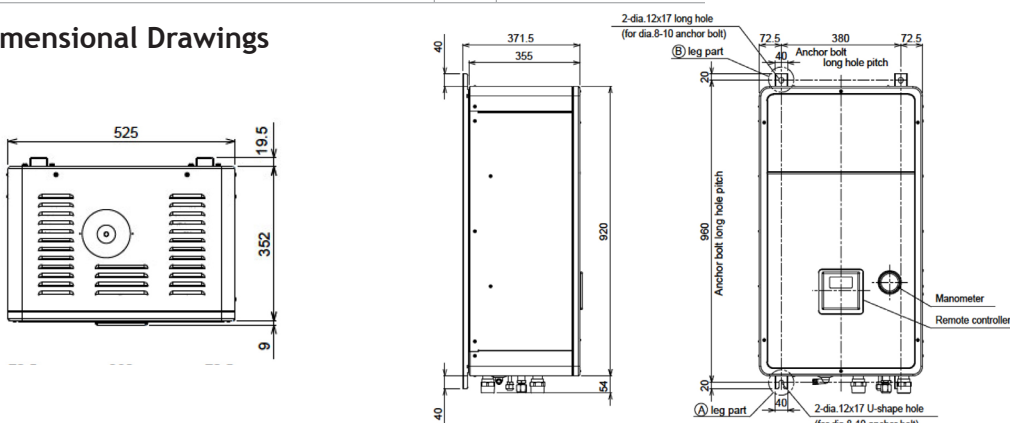
Hydro unit combination	HWS-1405XWHT6-E	
Outdoor unit	HWS-1405H8(R)-E	
<b>Seasonal space heating energy efficiency low temperature</b>		
Energy efficiency class - low temperature	A++	
Seasonal space heating energy efficiency ( $\eta_s$ )	%	157
SCOP	4.00	
<b>Under floor heating - air 7°C, water 35°C</b>		
Maximum heating capacity	kW	15.77
Nominal heating capacity	kW	14.00
COP	W/W	4.44
<b>Under floor heating - air -7°C, water 35°C</b>		
Maximum heating capacity	kW	10.64
Heating capacity*	kW	8.64
COP	W/W	2.76
<b>Under floor heating - air -15°C, water 35°C</b>		
Maximum heating capacity	kW	8.16
Heating capacity*	kW	7.30
COP	W/W	2.60
<b>Radiators heating - air 7°C, water 45°C</b>		
Maximum heating capacity	kW	15.07
<b>Radiators heating - air -7°C, water 45°C</b>		
Maximum heating capacity	kW	10.12
<b>Radiators heating - air -15°C, water 45°C</b>		
Maximum heating capacity	kW	7.75
<b>Seasonal space heating energy efficiency mid temperature</b>		
Energy efficiency class - medium temperature	A++	
Seasonal space heating energy efficiency ( $\eta_s$ )	%	129
SCOP	3.30	
<b>Radiators heating - air 7°C, water 55°C</b>		
Maximum heating capacity	kW	13.64
<b>Radiators heating - air -7°C, water 55°C</b>		
Maximum heating capacity	kW	9.76
Nominal cooling capacity -air 35°C, water 7°C	kW	11.00
EER	W/W	2.89

#### Hydro Unit Physical Data

Hydro unit	HWS-1405XWHT6-E	
To be used with size	110-140-160	
Electric back-up heater capacity	kW	6.0
Leaving water temperature space heating	°C	20-55
Leaving water temperature space cooling	°C	7-25
Dimensions (H x W x D)	mm	925 x 525 x 355
Weight	kg	52
Sound pressure level	dB(A)	29
Electric back-up heater supply	V-ph-Hz	380/400-3-50
Maximum current	A	13.0 x 2

Maximum heating capacities are shown at peak value during operation, at maximum compressor operating range in accordance with EN14511. Nominal heating capacities are given at water delta T 5 K and rated compressor operating frequency in accordance with EN14511.  
 \* Heating capacities at -7°C are shown at maximum compressor operating frequency in accordance with EN14511.  
 Energy efficiency class and Seasonal space heating energy efficiency ( $\eta_s$ ) are provided for average climate conditions in accordance with EN14825.

#### Dimensional Drawings



Cool Designs Ltd

Raising the Standards in Air Conditioning Distribution

www.cdlweb.info

