

Toshiba Air Conditioning - Estia Split Data Sheet

HWS-1405XWHM3-E Estia Split - Air-to-Water Heat Pump



Features

- High energy efficiency providing enhanced energy savings
- Quick and easy to install
- Large screen remote controller - simple, intuitive and easy to use
- Best in class performances

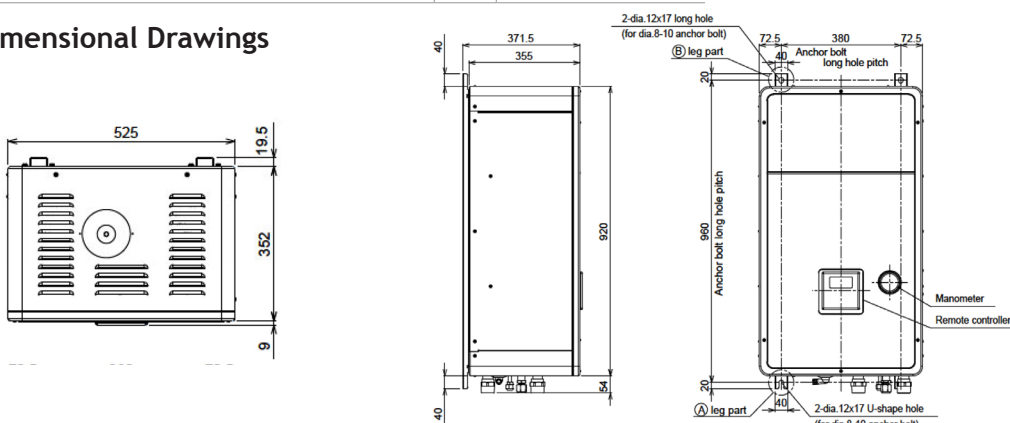
Hydro Unit Performance Data

Hydro unit combination		HWS-1405XWHM3-E
Outdoor unit		HWS-1405H-E
Seasonal space heating energy efficiency low temperature		
Energy efficiency class - low temperature		A++
Seasonal space heating energy efficiency (η_s)	%	159
SCOP		4.05
Under floor heating - air 7°C, water 35°C		
Maximum heating capacity	kW	14.73
Nominal heating capacity	kW	14.00
COP	W/W	4.50
Under floor heating - air -7°C, water 35°C		
Maximum heating capacity	kW	10.79
Heating capacity*	kW	8.63
COP	W/W	2.62
Under floor heating - air -15°C, water 35°C		
Maximum heating capacity	kW	8.34
Heating capacity*	kW	7.31
COP	W/W	2.47
Radiators heating - air 7°C, water 45°C		
Maximum heating capacity	kW	13.93
Radiators heating - air -7°C, water 45°C		
Maximum heating capacity	kW	9.17
Radiators heating - air -15°C, water 45°C		
Maximum heating capacity	kW	7.37
Seasonal space heating energy efficiency mid temperature		
Energy efficiency class - medium temperature		A++
Seasonal space heating energy efficiency (η_s)	%	129
SCOP		3.30
Radiators heating - air 7°C, water 55°C		
Maximum heating capacity	kW	12.56
Radiators heating - air -7°C, water 55°C		
Maximum heating capacity	kW	8.92
Nominal cooling capacity -air 35°C, water 7°C	kW	11.00
EER	W/W	2.89

Hydro Unit Physical Data

Hydro unit		HWS-1405XWHM3-E
To be used with size		110-140-160
Electric back-up heater capacity	kW	3.0
Leaving water temperature space heating	°C	20-55
Leaving water temperature space cooling	°C	7-25
Dimensions (H x W x D)	mm	925 x 525 x 355
Weight	kg	52
Sound pressure level	dB(A)	29
Electric back-up heater supply	V-ph-Hz	220/230-1-50
Maximum current	A	13.0

Dimensional Drawings



Maximum heating capacities are shown at peak value during operation, at maximum compressor operating range in accordance with EN14511. Nominal heating capacities are given at water delta T 5 K and rated compressor operating frequency in accordance with EN14511.

* Heating capacities at -7°C are shown at maximum compressor operating frequency in accordance with EN14511.

Energy efficiency class and Seasonal space heating energy efficiency (η_s) are provided for average climate conditions in accordance with EN14825.

