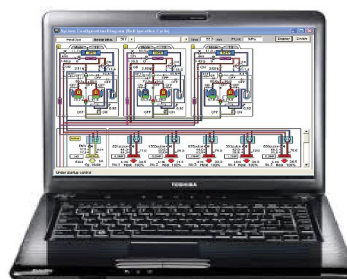




Technical Training Programme 2019 - 2020



Cool Designs Ltd

Raising the Standards in Air Conditioning Distribution

www.cdlweb.info





Cool Designs in cooperation with **TOSHIBA** Air Conditioning and **Fujitsu** Air Conditioning are pleased to introduce our industry acknowledged technical training programme for 2019 - 2020.

As a part of the **TOSHIBA** Enhanced Warranty Scheme, ***"To qualify for the extended warranty period all engineers including sub-contractors routinely working on Toshiba air conditioning equipment shall have a current training course registration number (valid for 3 years from date of issue and subject to attendance for any new or later generation equipment training courses) and must have completed the RAV DI/SDI - (T2), VRF - (T3), and Controls - (TCC9) technical training courses."***

Delegates must **physically** attend a VRF (T3) course, the RAV DI/SDI (T2) and the Controls (TCC9) can be completed either in person through one of our scheduled sessions, or via the **Toshiba** on-line training portal, **Toshiba** online training registration form available on page 26 of this publication.

To facilitate our South of England customers requirements, we have allocated dates for sessions to be held in your geographical area, (final locations to be confirmed nearer the scheduled dates), for more information please contact your local Cool Designs contact.

As well as the **Toshiba** VRF (T3) courses we are also offering scheduled DI/SDI (T2) and Controls (TCC9) courses.

In addition to the **Toshiba** courses offered, we also offer **Fujitsu** VRF (F3) and **Fujitsu** "Splits" (F2) also held at one of our dedicated interactive facilities, Alternatively If you would prefer we can make arrangements for our customers to attend **Fujitsu's** training sessions held at one of there Training Facility.

Not only have we increased the number of core courses available, we also offer additional bespoke training courses on request.

If none of the above options are suitable for your organization we can, on request and by appointment,

"Bring the training and trainer" to you! (Excludes "Hands On Courses"),
a minimum quantity of 5 people per session would be required.

"A well trained workforce increases a companies productivity and profitability."

And best of all, ALL **Cool Designs** training courses are

"FREE OF CHARGE—With NO Catches!"

Cool Designs Ltd

Raising the Standards in Air Conditioning Distribution

www.cdweb.info





Core Courses Available;

Introduction to the product range, available for **Toshiba** (T1) and **Fujitsu** (F1) products, (On Request)

Installation, Commissioning and Servicing, available for **Toshiba** (T2) and **Fujitsu** (F2) residential and light commercial (Split's) products, (Scheduled)

VRF system application and design, available for **Toshiba** and **Fujitsu** products (VRF4), (On Request)

VRF Installation, Commissioning and Servicing, available for **Toshiba** (T3) and **Fujitsu** (F3) products, (Scheduled)

Air to Water system design and application, available for **Toshiba**, **Fujitsu** and **Ciat** products (ATW5), (On Request)

Toshiba TCC Controls, Installation, set-up and configuration of a range of control options, covering standard controls, central controls, BMS interfaces and assorted control accessories. (Scheduled)

In addition to the "Core" courses outlined above we can offer a wide range of speciality course, If you cannot see the course best suited to you or your staff please contact our training team to discuss.

All of our courses have been devised to ensure that we offer all our customers the product and development training they need. It also confirms our support to the industry in ensuring that high levels of professionalism are encouraged and maintained.

Delegates attending these courses will receive electronic copies of the presentation material, course notes, technical manuals, (Where applicable) over 2gb of data!, a certificate of achievement will be issued by CDL, incorporating the delegates individual **Toshiba** registration number, refreshments and lunch – all free of charge.

We are confident that you will find a course to suit you and your colleagues or staff requirements.

To register your interest in a course, simply complete the Training Application Request, pages 17, 20, 21, 22 or 23 of this publication, please select the one applicable to your geographical area and email to the address below.

Alternatively contact your Cool Designs sales contact or a member of our training team to discuss your requirements on;

Tel: 07590 775 510 or via email: support@cooldesignsltd.co.uk

Please note that all courses are on a first come first served basis. If we are over-subscribed we will contact you to arrange alternative training dates. Cool Designs Limited reserve the right to decline applications and to cancel / amend / substitute training dates – if this is necessary for any reason. One of our representatives will contact you at least 48 hours prior to the training date.



Cool Designs Ltd

Raising the Standards in Air Conditioning Distribution

www.cdlweb.info



The TOSHIBA technical training programme for 2019 - 2020 contains 7 courses, with 3 Primary Courses:-

1. Residential & Light Commercial (RAS/DI/SDI) Installation and service [T2]. (Prime)
2. Commercial Range (VRF) Installation and Service [T3]. (Prime)
3. Commercial Range (VRF) Design & Application. [VRF4]
4. Refrigerant Leak Detection Systems.
5. TCC Controls [TCC9]. (Prime)
6. Air to Water (Estia).
7. Understanding Legislation & EUP Lot 10.

Duration of courses 1, 2 and 6 would be one working day, (per course).
Courses 3, 4, 5 and 7 being half day courses, (per course).

Quotation from **Toshiba's** additions Terms and Conditions.

"Toshiba's Additions members are audited for technical excellence by Toshiba's technical department, the audit includes their engineers having been trained on Toshiba's current air conditioning products including installation, service and controls, (The three required courses are T2, T3 & TCC9)"

In January 2016 Toshiba launched an industry leading warranty scheme. Offering customers a 7 Year Enhanced warranty, (Fully Comprehensive Warranty (FCW)). To qualify for this enhancement FCW scheme all engineers and sub-contractors routinely working on Toshiba Air Conditioning equipment, shall have a current training course registration number (valid for 3 years) and must have completed the following training courses;
T2 (RAV), T3 (VRF) & TCC9 (Controls).

T5 Registered Installer



T7 Approved
Warranty Partner



T7 Enhanced
Warranty Partner



Cool Designs Ltd

Raising the Standards in Air Conditioning Distribution

www.cdweb.info





The **FUJITSU training programme for 2019 - 2020 contains 10 courses:-**

Course 1—An introduction to the Fujitsu Product Portfolio.	- 1 Day
Course 2—Split and Multi-Split Systems, Installation, Commissioning, Troubleshooting and Service Tool.	- 1 Day
Course 3—Mini VRF. Installation, Commissioning and Troubleshooting.	- 1 Day
Course 4— VRF System Application and Design Including Design Simulator.	- 1 Day
Course 5— VRF System Installation, Commissioning and Service Tool.	- 1 Day
Course 6— VRF Advanced Service and Troubleshooting Including Service Tool - Cost per delegate £125	- 1 Day
Course 7— VRF Central Controllers, Installation and Commissioning - Advanced - Cost per delegate £125	- 1 Day
Course 8 - R32 - An insight to R32. Including, Installation, Commissioning and Troubleshooting	- 1/2 Day
Course 9— TBC	- 1 Day
Course 10— AHU DX Kit and Freeverter Options. Design, Installation and Commissioning.	- 1 Day

Cool Designs are please to be able, in cooperation with **Fujitsu** air conditioning, to offer courses 2 and 5, in our facilities at Warrington, Gateshead and Glasgow.

Alternatively, arrangements can be made for **Cool Designs** customers to attend one of **Fujitsu's** dedicated training facility located in Glasgow, Leeds, Midlands, London and Eastleigh, full details available on request.

Quotation from Fujitsu's Comfort-club Terms and Conditions.

"Free training - (Selected courses), (Compulsory attendance of 2 days training per fiscal year)
All "Installation and Commissioning", "Installation, Commissioning and Troubleshooting"
and "Advanced Service and Troubleshooting" training courses to be attended by F-gas
Registered Engineers only. (Proof of registration required before attendance)"



Cool Designs Ltd

Raising the Standards in Air Conditioning Distribution

www.cdlweb.info



Course Reference: T1

An introduction to the complete range of **Toshiba** Air Conditioning and Air to Water systems.

This theory based course is suitable for anyone who is not familiar with the latest **Toshiba** air conditioning and air to water, R410A & R32 products.

•Air to Water Range.

Estia	Standard Split Type	Single Phase 8kW to 14kW Three Phase 11kW to 16kW
	High Temperature Split Type	Single Phase 8kW and 11kW
	Monobloc	Three Phase 17kW and 21kW

•Residential Range.

Daiseikai range of single.
Single systems, R410A & R32 high wall - Mirai, Shorai, Bi-flow Console
Multi split systems, high wall, Bi-flow, ducted and 600 x 600 cassettes.

•Commercial Range.

Digital Inverter R410A & R32 from 2.5kW to 28kW
Super Digital Inverter R410A & R32 from 4kW to 16kW

•VRF Range.

MINI-VRF R410A, Two pipe heat pump, 4 hp(12.5kW), 5 hp(16kW), 6 hp(18kW)
SMMSe, R410A Two pipe heat pump R410A, 8 hp (25kW) – 60 hp (178kW)
SHRMe, R410A Three pipe heat recovery R410A, 8 hp (25kW) – 42 hp (132kW)
Over 110 indoor units compatible with the three options above.
Wide range of Control options available

Training will commence at 9.30 am and conclude at 1.30 pm.
Course materials and refreshments will be provided free-of-charge.

Minimum quantity of delegates 4
Maximum quantity of delegates 20*

Course available on request, subject to quantity of delegates.





Course Reference: F1

An introduction to the complete range of **Fujitsu** R410A & R32 Air Conditioning products.

This module is suitable for anyone who is not familiar with the latest **Fujitsu** air conditioning products.

•Split.

Single Split Systems from 2.2kW to 22kW
Wall Mounted, Compact Cassette, Standard Cassette, Circular Flow Cassette,
Floor, Floor/Ceiling, Ceiling, Slim Duct,
Duct, Medium Static Duct, High Static Duct, Big Duct.

•Multi Split

Multi Split options from 2 Indoor units to 6 indoor units 4kW to 12.5kW
Commercial Simultaneous Multi Twin, Triple & Quad systems 10kW to 22kW

•VRF Range.

J-Series, J-IIS, J-III, J-IIIL, MINI-VRF, 2 pipe heat pump, 4 hp(12.1kW) - 16 hp(45kW)
V-III 2 Pipe VRF, 2 pipe heat pump, 8 hp (25kW) – 54 hp (150kW)
VR-II 3 pipe VRF heat recovery, 8 hp (25kW) – 48 hp (150kW)
With 14 types and 81 models compatible with the three options above.
Assorted control options.

Training will commence at 9.30 am and conclude at 1.30 pm.
Course materials and refreshments will be provided free-of-charge

Minimum quantity of delegates 4
Maximum quantity of delegates 20*

Course available on request, subject to quantity of delegates.



Cool Designs Ltd

Raising the Standards in Air Conditioning Distribution

www.cdweb.info



Course Reference: T2

An in-depth course covering Installation, Commissioning, Service and Maintenance of the **Toshiba** residential and commercial R32 & R410A products.

This course is theory based and is aimed at installation, commissioning and service engineers, with a prior knowledge of air conditioning products and the principles of air conditioning.

All delegates must be F-gas or equivalent registered.

This course covers;

- **Product overview.**
- **Refrigeration circuitry, R32 & R410A Refrigerant and current legislation, pressure testing, dehydration and refrigerant charging.**
- **Electrical circuitry, including Inverter technology.**
- **Commissioning.**
- **Service and maintenance requirements.**
- **Component layout and fault finding including data retrieval.**
- **Overview of Control options.**

Upon satisfactory completion of a written examination a certificate of achievement with individual **Toshiba** registration numbers will be issued by CDL.

For companies who are enrolled into the **Toshiba** Enhanced Warranty scheme, part of that agreement being that their staff will complete a number of training courses, (T2, T3 & TCC9), the above course forms apart of this agreement.

**Cool Designs Ltd are an authorised training facility for and on behalf of
Toshiba Air Conditioning.**

Training will commence at 9.30 am and conclude at 4.30 pm.
Course materials and refreshments will be provided free-of-charge.

Minimum quantity of delegates 4
Maximum quantity of delegates 20*

For available courses in your area please refer to the schedule section, page 19 of this publication.

Cool Designs Ltd

Raising the Standards in Air Conditioning Distribution

www.cdweb.info





Course Reference: F2

An in-depth course covering Installation, Commissioning and Troubleshooting of Fujitsu Split and Multi-Split type systems.

This **theory based** course is valuable for anyone involved in the installation, Commissioning of **Fujitsu** Split and Multi-Split type systems and is aimed at Installation / Commissioning engineers, with a prior knowledge of air conditioning products and the principles of air conditioning.

All delegates must be F-gas or equivalent registered.

Course Summary:

- Introduction to the current product range.
- Explanation of terms and technologies (e.g. Inverters, double swing louvres etc.)
- Review of refrigerant and electrical circuit diagrams and basic operation principles.
- Pipe work, interconnecting cable and control methods.
- Remote controller types– functions, setting up, fault codes.
- Fault finding review.
- Introduction to the new fault finding application.
- Questions and Answers.

Upon satisfactory completion of a written examination a certificate of achievement will be issued.

For companies who are enrolled into the **Fujitsu** Comfort club scheme, part of that agreement being that there staff will complete 2 training courses per annum, the above course forms apart of this agreement.

**Cool Designs Ltd are an authorised training facility for and on behalf of
Fujitsu Air Conditioning.**

Training will commence at 9.30 am and conclude at 4.30 pm.
Course materials and refreshments will be provided free-of-charge

Minimum quantity of delegates 4
Maximum quantity of delegates 20*

Course available on request, subject to quantity of delegates.



Cool Designs Ltd

Raising the Standards in Air Conditioning Distribution

www.cdweb.info



Course Reference: T3

An in-depth course on **Toshiba** R410A VRF equipment,

This course is **theory based** and is aimed at installation, commissioning and service engineers, with a prior knowledge of VRF air conditioning equipment and the principles of air conditioning. **All delegates must be F-gas or equivalent registered.**

This course covers;

- Product overview, Including the new award winning, mini VRF, SMMSe & SHRMe Range.
- Installation, Refrigeration circuitry, R410A refrigerant and current legislation, pressure testing, dehydration and refrigerant charging.
- Electrical installation.
- Commissioning the systems.
- Service and maintenance requirements.
- Data retrieval and service functions.
- Component testing.
- Fault finding including fault codes.
- Overview of Control options.
- A physical run through of the automatic addressing facility will be carried out on the installed equipment within the training facility.

Upon satisfactory completion of a written examination a certificate of achievement with individual **Toshiba** registration numbers will be issued by CDL.

For companies who are enrolled into the **Toshiba** Enhanced Warranty scheme, part of that agreement being that their staff will complete a number of training courses, (T2, T3 & TCC9), the above course forms apart of this agreement.

**Cool Designs Ltd are an authorised training facility for and on behalf of
Toshiba Air Conditioning.**

Training will commence at 9.30 am and conclude at 4.30 pm.
Course materials and refreshments will be provided free-of-charge

Minimum quantity of delegates 4
Maximum quantity of delegates 20*

For available courses in your area please refer to the schedule section, page 19 of this publication.

Cool Designs Ltd

Raising the Standards in Air Conditioning Distribution

www.cdlweb.info





Course Reference: F3

An in-depth course covering the Installation and Commissioning of a **Fujitsu** VRF system.

This **theory based** course is valuable for anyone involved in the installation, Commissioning of **Fujitsu** VRF type systems and is aimed at Installation / Commissioning engineers, with a prior knowledge of VRF systems and the principles of air conditioning. **All delegates must be F-gas or equivalent registered.**

Course Summary:

- Understanding the limitations of the system.
- Understanding pipe work design.
- Understanding the systems power supply requirements.
- Understanding the recommended installation procedures.
- Calculating the systems refrigerant charge.
- Set-up the systems address configuration of outdoor and indoor units.
- Understanding how to start up the system and test run.
- Learn how to avoid common mistakes.
- Introduction to the new fault finding application.

Upon satisfactory completion of a written examination a certificate of achievement will be issued.

For companies who are enrolled into the **Fujitsu** Comfort club scheme, part of that agreement being that there staff will complete 2 training courses per annum, the above course forms apart of this agreement.

**Cool Designs Ltd are an authorised training facility for and on behalf of
Fujitsu Air Conditioning.**

Training will commence at 9.30 am and conclude at 4.30 pm.
Course materials and refreshments will be provided free-of-charge

Minimum quantity of delegates 4
Maximum quantity of delegates 20*

Course available on request, subject to quantity of delegates.



Cool Designs Ltd

Raising the Standards in Air Conditioning Distribution

www.cdweb.info



Course Reference: VRF4

VRF Application and Design.

A course specifically designed for anyone involved in the design and application of VRF systems and encompasses two major VRF manufacturers equipment and tools.

TOSHIBA
Leading Innovation >>>

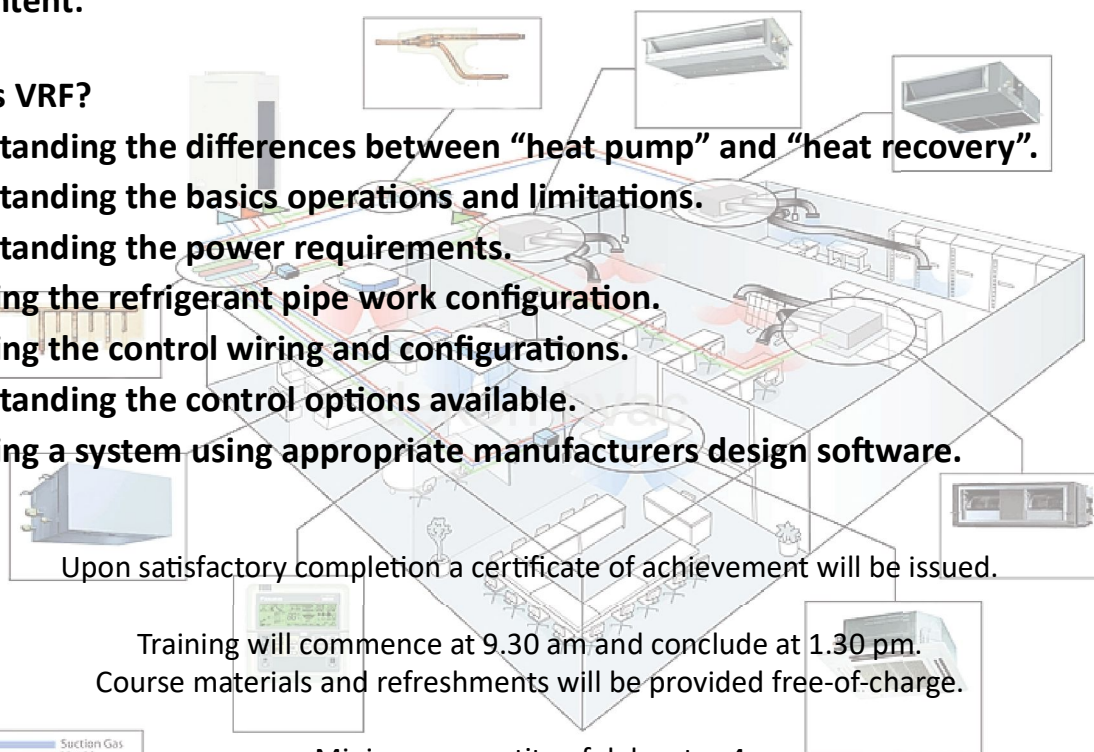
FUJITSU
AIR CONDITIONING

A half day **theory based** course, outlining the differences between “Heat Pump and Heat Recovery” design and application, how to get the best out of a design, the course also incorporates the correct use of manufacturers selection/application/design software.

Please note, load calculations are NOT included.

Course Content:

- What is VRF?
- Understanding the differences between “heat pump” and “heat recovery”.
- Understanding the basics operations and limitations.
- Understanding the power requirements.
- Designing the refrigerant pipe work configuration.
- Designing the control wiring and configurations.
- Understanding the control options available.
- Designing a system using appropriate manufacturers design software.



Upon satisfactory completion a certificate of achievement will be issued.

Training will commence at 9.30 am and conclude at 1.30 pm.
Course materials and refreshments will be provided free-of-charge.

Minimum quantity of delegates 4
Maximum quantity of delegates 20*

Course available on request, subject to quantity of delegates.

Cool Designs Ltd

Raising the Standards in Air Conditioning Distribution

www.cdweb.info





Course Reference: ATW 5

Air to Water Application and Design.

A course specifically designed for anyone involved in the design and application of Air to Water systems and encompasses three major manufacturers equipment and tools.

TOSHIBA
Leading Innovation >>>

FUJITSU
AIR CONDITIONING



A half day **theory based** course, outlining the “pros and cons” associated with the design and application of Air to Water products the course also incorporates the correct use of manufacturers selection/application/design software.

Please note, load calculations are NOT included.

Course Content:

- What are Air to Water systems.
- Understanding the basics of air to water systems.
- How to apply and where to apply Air to Water systems.
- Understanding the basics operations and limitations.
- Understanding the power requirements.
- How to select the correct style of system, Mono-Block or Bi-block.
- Understanding the control options available.
- Designing a system using appropriate manufacturers design software.

Upon satisfactory completion a certificate of achievement will be issued.

Training will commence at 9.30 am and conclude at 1.30 pm.
Course materials and refreshments will be provided free-of-charge.

Minimum quantity of delegates 4
Maximum quantity of delegates 20*

Course available on request, subject to quantity of delegates.



Cool Designs Ltd

Raising the Standards in Air Conditioning Distribution

www.cdlweb.info



Course Reference: TRL7

Refrigerant leak detection systems

This half day theory based course covers the application, installation and service/maintenance of **Toshiba's** award winning refrigerant leak detection systems. Covering products LD1, LD2, outlining which elements meet either BS EN378 and or complies with BREEAM.

- Complying with legislation including BS EN378 & BREEAM.
- **Toshiba** leak detection product overview.
- Selecting leak detection products.
- Benefits and application of leak detection.
- Utilising the LD1, LD2 to comply with F-gas directive.
- Installation & commissioning.
- Service & maintenance.

Upon satisfactory completion a certificate of achievement will be issued.

Training will commence at 9.30 am and conclude at 1.30 pm.
Course materials and refreshments will be provided free-of-charge

Minimum quantity of delegates 4
Maximum quantity of delegates 20*

Course available on request, subject to quantity of delegates.





Course Reference: TCC9

Toshiba TCC Link Controls

This half day theory & practical course covers the application, installation and service of **Toshiba's** TCC Link control options, from an overview of control options to how to integrate **Toshiba** equipment into third party control solutions.

The day will take in the theory of controls through to the actual configuration of some of the control options available.

- Theory and practical course.
- Overview of Toshiba control products.
- Overview of Toshiba integration to third party systems. Including "Intensis home" integration.
- Network principles.
- Addressing techniques.
- Integrating BMS technology.
- Practical training on control products including central control, including the new Smart Touch Screen, smart manager & BMS products.

Upon satisfactory completion of a written examination a certificate of achievement with individual **Toshiba** registration numbers will be issued by CDL.

For companies who are enrolled into the **Toshiba** Enhanced Warranty scheme, part of that agreement being that their staff will complete a number of training courses, (**T2, T3 & TCC9**), the above course forms apart of this agreement.

**Cool Designs Ltd are an authorised training facility for and on behalf of
Toshiba Air Conditioning.**

Training will commence at 9.30 am and conclude at 1.30 pm.
Course materials and refreshments will be provided free-of-charge.

Minimum quantity of delegates 4
Maximum quantity of delegates 20*

For available courses in your area please refer to the schedule section, page 19 of this publication.



Cool Designs Ltd

Raising the Standards in Air Conditioning Distribution

www.cdlweb.info



Course Reference: TLot10

Understanding Legislation & EUP Lot 10

This half day **theory based** course is intended to clarify current legislation and EUP Lot10 applicable to the UK Air Conditioning industry and is best suited for designers, application engineers, project engineers, senior engineers and business owners.

- **Overview of current legislation in relation to air conditioning products**
- **Overview of current legislation in relation to air to water products.**
- **Lot 10 and what it means**
- **Legislation under consideration.**
- **How to interpret system performance based on new criteria**
- **Analysis of the impact of current & proposed legislation on Air conditioning system.**

Upon satisfactory completion a certificate of achievement will be issued.

Training will commence at 9.30 am and conclude at 1.30 pm.
Course materials and refreshments will be provided free-of-charge.

Minimum quantity of delegates 4
Maximum quantity of delegates 20*

Course available on request, subject to quantity of delegates.





“Hands On Courses”

We offer “Hands On” courses at our Warrington, Gateshead and Glasgow facilities.

The courses are intended for all installation/service/maintenance engineers working with **Toshiba** air conditioning equipment.

The courses will be held on Friday mornings and will comprise of:

Option 1- Fault finding on **Toshiba** two/three pipe VRF System.

Option 2—Setting up a **Toshiba** VRF system, how to erase settings and re-address a system.

Option 3—Getting the most out of **Toshiba** controls, control options covered, RBC-AMT32/ AMS41/AMS54/AMS55, RBC-TBPTS (Colour Touch Screen Central Controller).

Option 4—Working with Aluminium Pipe Work (Aluminium pipe is approved by **Toshiba** air conditioning.)

Please note, The above courses are of a “hands on” nature, delegates attending should be suitable attired with appropriate PPE for the work being undertaken.

Cool Designs Ltd whilst taking all relevant protective measures cannot be held liable or responsible for injuries incurred whilst attending the training session.

Training will commence at 9.30 am and conclude at 12.30 pm.
Course materials and refreshments will be provided free-of-charge.

Minimum quantity of delegates 3
Maximum quantity of delegates 8

Courses are subject to minimum quantities.



Cool Designs Ltd

Raising the Standards in Air Conditioning Distribution

www.cdlweb.info



Based on customer feed-back, we have restructured our training calendar for 2019 - 2020, for Warrington and Gateshead training, courses will be held on **Wednesday's**, (09.30am to 4.30pm unless specified differently).

Glasgow courses will be held on **Thursday's**, (09.30am to 4.30pm unless specified differently).

"TCC Link Controls" courses are 09.30am to 13.30pm)

"Hands on" courses will be held on **Friday's**, (09.30am to 1.30pm unless specified differently).

Some courses will be scheduled based on demand, please refer to the relevant course for start and finish times, minimum and maximum quantities will apply, once we receive sufficient requests we will contact the respective applicants advising of the dates allocated to each course, we are aiming to provide this notification approx. Two weeks ahead of the scheduled date.

Details of the scheduled courses are on the next page.

Editable application forms are available via
"Technical Training Registration Forms"
which is available for download from our web site;
www.cdlweb.info/training

If the dates offered don't suit your work schedule,
please contact us so that we can see what we can re-schedule.

Wherever possible we will do our best to meet our customer's requests.





Course	Location	Date	Location	Date
T3 - Toshiba VRF	Warrington	09/10/19		
	Gateshead	16/10/19	Glasgow	17/10/19
T2 - Toshiba Residential & Commercial	Warrington	23/10/19		
	Gateshead	30/10/19	Glasgow	31/10/19
TCC9 - Toshiba TCCJ Controls	Warrington	06/11/19		
	Gateshead	13/11/19	Glasgow	14/11/19
F2 - Fujitsu Split & Multi Split	Warrington	20/11/19		
T2 - Toshiba Residential & Commercial	Location to be advised	27/11/19		
T3 - Toshiba VRF	Location to be advised	28/11/19		
T3 - Toshiba VRF	Warrington	04/12/19		
	Gateshead	11/12/19	Glasgow	12/12/19
T2 - Toshiba Residential & Commercial	Warrington	15/01/20		
	Gateshead	22/01/20	Glasgow	23/01/20
TCC9 - Toshiba TCCJ Controls	Warrington	29/01/20		
	Gateshead	05/02/20	Glasgow	06/02/20
F-3 Fujitsu VRF	Warrington	12/02/20		
F2 - Fujitsu Split & Multi Split	Gateshead	26/02/20	Glasgow	27/02/20
T3 - Toshiba VRF	Gateshead	11/03/20	Glasgow	12/03/20
	Warrington	18/03/20		
T2 - Toshiba Residential & Commercial	Location to be advised	25/03/20		
T3 - Toshiba VRF	Location to be advised	26/03/20		
T2 - Toshiba Residential & Commercial	Gateshead	22/04/20	Glasgow	23/04/20
	Warrington	29/04/20		
F3 - Fujitsu VRF	Gateshead	06/05/20	Glasgow	07/05/20
TCC9 - Toshiba TCCJ Controls	Warrington	13/05/20		
	Gateshead	20/05/20	Glasgow	21/05/20
Course to be Confirmed	Warrington	27/05/20		
	Gateshead	03/06/20	Glasgow	04/06/20
Key: Yellow - Fujitsu Courses. Blue - Toshiba courses in the South - Venue to be announced.				

Please note that all courses are on a first come first served basis. If we are over-subscribed we will contact you to arrange alternative training dates. Cool Designs Limited reserve the right to decline applications and to cancel / amend / substitute training dates – if this is necessary for any reason. One of our representatives will contact you at least 48 hours prior to the training date.



www.cdlweb.info



Cool Designs Ltd

Raising the Standards in Air Conditioning Distribution



Technical Training Suggestions

Whilst we believe our training syllabus covers the majority of elements associated with the products we sell, If you have a specific requirement for a technical training course which is not listed within this publication, please do not hesitate in dropping us an email and let us know what you require.

It maybe a course we are considering or we never thought about it? Either way once we know what it is we can investigate the feasibility of us offering it.

Our email address is:

support@cooldesignsltd.co.uk

Or if you just want to chat about your idea give us a call on:

07590 775 510

Cool Designs Ltd

Raising the Standards in Air Conditioning Distribution

www.cdweb.info





Specific Requirements.

Could requesting companies please advise our training team at the time of requesting places, of any special requirements associated with the delegate who may be attending one of our courses, these cover any specific;

Access, Audible, Visual or Dietary requirements.

In the unlikely event that we are unable to meet these requirements, we shall contact the requesting company and advise them of the situation prior to the scheduled session.

Health and Safety.

Whilst we take every precaution in respect to the safety and well being of all delegates attending any of our training sessions, we would advise that the delegates will be in a technical training facility which will have fully operational air conditioning or heat pump equipment as such we would recommend that all delegates are suitably attired with appropriate PPE (were applicable), for the work being undertaken.

Cool Designs Ltd, whilst taking all relevant protective measures cannot be held liable or responsible for injuries incurred whilst attending the training session.

General.

Training courses will start at 9.30am and conclude at 4.30pm, unless specifically advised differently.

As spaces are limited, we operate a "First Come First Served" process, date and /or time of e-mail being the reference point.

Training courses offered by Cool Designs Ltd, are free of charge, as places are limited per session, we reserve the right to charge £50 per head for **NON-ATTENDANCE** with **NO** prior notification (**48 hours**).

Cool Designs or our authorised agents will **NOT** be liable for travel or accommodation costs unless authorise in writing prior to the scheduled dates, this applies to in-house or external training sessions.

We will contact requesting companies with confirmation of your request two weeks prior to the scheduled session, we will make all efforts to meet your requirements wherever possible, places are not guaranteed until the requester receives our confirmation.

A minimum quantity of delegates will be required per session, in the event of limited numbers we reserve the right to cancel or re-schedule any session.

Cool Designs Ltd, reserve the right to cancel, delete, amend or substitute any of the scheduled sessions contained within this publication.

Note: * Warrington & Gateshead Facility - Glasgow Maximum of 10



Cool Designs Ltd

Raising the Standards in Air Conditioning Distribution

www.cdlweb.info





Cool Designs Ltd

Raising the Standards in Air Conditioning Distribution

www.cdweb.info



Contact details;

Cool Designs Ltd Technical Support

07590 775 510 / 07706 293 028

Toshiba Air Conditioning
24/7 technical support

0870 843 0333 - Option 7

Text back service

07624 803 017

(Type fault code in lower case no spaces)



Cool Designs Ltd reserves the right to change the product specifications, data and images without prior notice

Cool Designs Ltd

Raising the Standards in Air Conditioning Distribution

www.cdweb.info

