

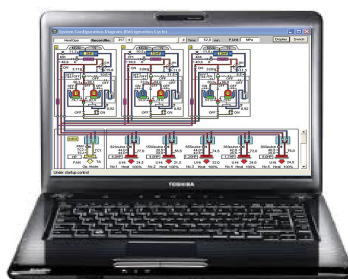


# Technical Training Registration Forms 2019 - 2020



Course	Location	Date	Location	Date
T3 - Toshiba VRF	Warrington	09/10/19		
	Gateshead	16/10/19	Glasgow	17/10/19
T2 - Toshiba Residential & Commercial	Warrington	23/10/19		
	Gateshead	30/10/19	Glasgow	31/10/19
TCC9 - Toshiba TCCJ Controls	Warrington	06/11/19		
	Gateshead	13/11/19	Glasgow	14/11/19
F2 - Fujitsu Split & Multi Split	Warrington	20/11/19		
I2 - Toshiba Residential & Commercial	Location to be advised	2/11/19		
T3 - Toshiba VRF	Location to be advised	28/11/19		
T3 - Toshiba VRF	Warrington	04/12/19		
	Gateshead	11/12/19	Glasgow	12/12/19
T2 - Toshiba Residential & Commercial	Warrington	15/01/20		
	Gateshead	22/01/20	Glasgow	23/01/20
TCC9 - Toshiba TCCJ Controls	Warrington	29/01/20		
	Gateshead	05/02/20	Glasgow	06/02/20
F-3 Fujitsu VRF	Warrington	12/02/20		
F2 - Fujitsu Split & Multi Split	Gateshead	26/02/20	Glasgow	27/02/20
T3 - Toshiba VRF	Gateshead	11/03/20	Glasgow	12/03/20
	Warrington	18/03/20		
T2 - Toshiba Residential & Commercial	Location to be advised	25/03/20		
T3 - Toshiba VRF	Location to be advised	26/03/20		
T2 - Toshiba Residential & Commercial	Gateshead	22/04/20	Glasgow	23/04/20
	Warrington	29/04/20		
F3 - Fujitsu VRF	Gateshead	06/05/20	Glasgow	07/05/20
TCC9 - Toshiba TCCJ Controls	Warrington	13/05/20		
	Gateshead	20/05/20	Glasgow	21/05/20
Course to be Confirmed	Warrington	27/05/20		
	Gateshead	03/06/20	Glasgow	04/06/20

Key: Yellow - Fujitsu Courses. Blue - Toshiba courses in the South - Venue to be announced.



## Cool Designs Ltd

Raising the Standards in Air Conditioning Distribution

[www.cdlweb.info](http://www.cdlweb.info)



# Training Schedule for 2019 - 2020

Course	Location	Date	Location	Date
T3 - Toshiba VRF	Warrington	09/10/19		
	Gateshead	16/10/19	Glasgow	17/10/19
T2 - Toshiba Residential & Commercial	Warrington	23/10/19		
	Gateshead	30/10/19	Glasgow	31/10/19
TCC9 - Toshiba TCCJ Controls	Warrington	06/11/19		
	Gateshead	13/11/19	Glasgow	14/11/19
F2 - Fujitsu Split & Multi Split	Warrington	20/11/19		
T2 - Toshiba Residential & Commercial	Location to be advised	27/11/19		
T3 - Toshiba VRF	Location to be advised	28/11/19		
T3 - Toshiba VRF	Warrington	04/12/19		
	Gateshead	11/12/19	Glasgow	12/12/19
T2 - Toshiba Residential & Commercial	Warrington	15/01/20		
	Gateshead	22/01/20	Glasgow	23/01/20
TCC9 - Toshiba TCCJ Controls	Warrington	29/01/20		
	Gateshead	05/02/20	Glasgow	06/02/20
F-3 Fujitsu VRF	Warrington	12/02/20		
F2 - Fujitsu Split & Multi Split	Gateshead	26/02/20	Glasgow	27/02/20
T3 - Toshiba VRF	Gateshead	11/03/20	Glasgow	12/03/20
	Warrington	18/03/20		
T2 - Toshiba Residential & Commercial	Location to be advised	25/03/20		
T3 - Toshiba VRF	Location to be advised	26/03/20		
T2 - Toshiba Residential & Commercial	Gateshead	22/04/20	Glasgow	23/04/20
	Warrington	29/04/20		
F3 - Fujitsu VRF	Gateshead	06/05/20	Glasgow	07/05/20
TCC9 - Toshiba TCCJ Controls	Warrington	13/05/20		
	Gateshead	20/05/20	Glasgow	21/05/20
Course to be Confirmed	Warrington	27/05/20		
	Gateshead	03/06/20	Glasgow	04/06/20
Key: Yellow - Fujitsu Courses. Blue - Toshiba courses in the South - Venue to be announced.				

Please note that all courses are on a first come first served basis. If we are over-subscribed we will contact you to arrange alternative training dates. Cool Designs Limited reserve the right to decline applications and to cancel / amend / substitute training dates – if this is necessary for any reason. One of our representatives will contact you at least 48 hours prior to the training date.

## Training Application Request.

<b>Company:</b>			
<b>Contact Name:</b>		<b>Position:</b>	
<b>Telephone:</b>		<b>Fax:</b>	
<b>Contact E-Mail:</b>			
Course Details	Date of Course (if listed?)	Quantity of Places Required	
T3 - Toshiba VRF	09/10/19		
T2 - Toshiba Residential & Commercial	23/10/19		
TCC9 - Toshiba TCCJ Controls	06/11/19		
<b>F2 - Fujitsu Split &amp; Multi Split</b>	<b>20/11/19</b>		
T3 - Toshiba VRF	04/12/19		
T2 - Toshiba Residential & Commercial	15/01/20		
TCC9 - Toshiba TCCJ Controls	29/01/20		
<b>F3 - Fujitsu VRF</b>	<b>12/02/20</b>		
T3 - Toshiba VRF	18/03/20		
T2 - Toshiba Residential & Commercial	29/04/20		
TCC9 - Toshiba TCCJ Controls	13/05/20		
Course to be Confirmed	27/05/20		

Training courses offered by Cool Designs Ltd are free of charge, as places are limited per session, we reserve the right to charge £50 per head for **NON-ATTENDANCE** with **NO** prior notification (48 hours).

**Confirmations will be issued approx two weeks ahead of the scheduled session.**

This form is an "Editable" form, please enter your details and the quantity of places required then email to;

**[support@cooldesignsltd.co.uk](mailto:support@cooldesignsltd.co.uk)**

Full terms and conditions are available at the end of this publication.

## Training Application Request.

<b>Company:</b>			
<b>Contact Name:</b>		<b>Position:</b>	
<b>Telephone:</b>		<b>Fax:</b>	
<b>Contact E-Mail:</b>			
Course Details	Date of Course (if listed?)	Quantity of Places Required	
T3 - Toshiba VRF	17/10/19		
T2 - Toshiba Residential & Commercial	31/10/19		
TCC9 - Toshiba TCCJ Controls	14/11/19		
T3 - Toshiba VRF	12/12/19		
T2 - Toshiba Residential & Commercial	23/01/20		
TCC9 - Toshiba TCCJ Controls	06/02/20		
<b>F2 - Fujitsu Split &amp; Multi Split</b>	<b>27/02/20</b>		
T3 - Toshiba VRF	12/03/20		
T2 - Toshiba Residential & Commercial	23/04/20		
<b>F3 - Fujitsu VRF</b>	<b>07/05/20</b>		
TCC9 - Toshiba TCCJ Controls	21/05/20		
<b>Course to be Confirmed</b>	<b>04/06/20</b>		

Training courses offered by Cool Designs Ltd are free of charge, as places are limited per session, we reserve the right to charge £50 per head for **NON-ATTENDANCE** with **NO** prior notification (48 hours).

**Confirmations will be issued approx two weeks ahead of the scheduled session.**

This form is an "Editable" form, please enter your details and the quantity of places required then email to;

**[support@cooldesignsltd.co.uk](mailto:support@cooldesignsltd.co.uk)**

Full terms and conditions are available at the end of this publication.

Final location to be confirmed, prior to booking.

## Training Application Request.

<b>Company:</b>			
<b>Contact Name:</b>		<b>Position:</b>	
<b>Telephone:</b>		<b>Fax:</b>	
<b>Contact E-Mail:</b>			
Course Details	Date of Course (if listed?)	Quantity of Places Required	
T2 - Toshiba Residential & Commercial	27/11/19		
T3 - Toshiba VRF	28/11/19		
T2 - Toshiba Residential & Commercial	25/03/20		
T3 - Toshiba VRF	26/03/20		

*Location will be either at **Toshiba's** training facility in Leatherhead, (Subject to availability), or a suitable venue within the geographical area, full details of the location will be issued prior to booking.*

*The above courses maybe changed from the listed course to one of the following;  
**Toshiba** T3 - VRF , T2 - DI/SDI or TCC9 - Controls, dependant on demand.*

Training courses offered by Cool Designs Ltd are free of charge, as places are limited per session, we reserve the right to charge £50 per head for **NON-ATTENDANCE** with **NO** prior notification (48 hours).

**Confirmations will be issued approx two weeks ahead of the scheduled session.**

This form is an "Editable" form, please enter your details and the quantity of places required then email to;

**[support@cooldesignsltd.co.uk](mailto:support@cooldesignsltd.co.uk)**

Full terms and conditions are available at the end of this publication.

## Online Training Application Form

### **Information Mandatory\***

<b>*Company:</b>		<b>Branch:</b>	
<b>*National Account:</b>			
Please state the Toshiba National account agreement your company is associated with, State if N/A			
<b>*Contact Name:</b>		<b>Position:</b>	
<b>*Company Address:</b>			
<b>*Telephone:</b>		<b>Fax:</b>	
<b>*Email:</b>			

Name of user (BLOCK CAPITALS)	User's email (BLOCK CAPITALS)

Please send this form to; [support@cooldesignsltd.co.uk](mailto:support@cooldesignsltd.co.uk)





## “Hands On Training” Registration Request.

<b>Company:</b>			
<b>Contact Name:</b>		<b>Position:</b>	
<b>Telephone:</b>		<b>Fax:</b>	
<b>Contact E-Mail:</b>			
Course Details			Qty. of Places Required
<b>Option 1</b>	Toshiba VRF System Fault Finding	— Warrington	
<b>Option 1</b>	Toshiba VRF System Fault Finding	— Gateshead	
<b>Option 1</b>	Toshiba VRF System Fault Finding	— Glasgow	
<b>Option 2</b>	Setting up Toshiba VRF System	— Warrington	
<b>Option 2</b>	Setting up Toshiba VRF System	— Gateshead	
<b>Option 2</b>	Setting up Toshiba VRF System	— Glasgow	
<b>Option 3</b>	Toshiba Remote Controls	— Warrington	
<b>Option 3</b>	Toshiba Remote Controls	— Gateshead	
<b>Option 3</b>	Toshiba Remote Controls	— Glasgow	
<b>Option 4</b>	Working with Aluminium Pipe	— Warrington	
<b>Option 4</b>	Working with Aluminium Pipe	— Gateshead	
<b>Option 4</b>	Working with Aluminium Pipe	— Glasgow	

On receipt of completed forms a member of our training team will contact the sender, offering suitable dates for the requested course. Cool Designs will make all efforts to meet your requirements wherever possible, we would recommend completing and returning this form as soon as possible.

Hands on training courses have limited spaces, as such Cool Designs will be operating a “First Come First Served” process, date and/or time of fax or email being the reference.

Training courses offered by Cool Designs Ltd, are free of charge, as places are limited per session, we reserve the right to charge £50 per head for **NON ATTENDANCE** with **NO** prior notification (48 Hours)

This form is an “Editable” form, please enter your details and the quantity of places required then email to;

**[support@cooldesignsltd.co.uk](mailto:support@cooldesignsltd.co.uk)**

Full terms and conditions are available at the end of this publication.



Contact details;

## Cool Designs Ltd Technical Support

**07590 775 510 / 07706 293 028**

Toshiba Air Conditioning  
24/7 technical support

0870 843 0333 - Option 7

Text back service

07624 803 017

(Type fault code in lower case no spaces)



Cool Designs Ltd reserves the right to change the product specifications, data and images without prior notice

# Cool Designs Ltd

Raising the Standards in Air Conditioning Distribution

[www.cdlweb.info](http://www.cdlweb.info)

