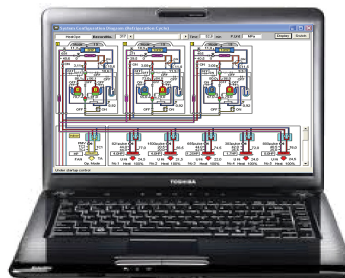




# Technical Training Programme



**Cool Designs Ltd**

Raising the Standards in Air Conditioning Distribution

[www.cdlweb.info](http://www.cdlweb.info)





## Cool Designs in cooperation with **TOSHIBA** Air Conditioning and **Fujitsu** Air Conditioning are pleased to introduce our industry acknowledged technical training programme for 2018 - 2019.

As a part of the **TOSHIBA** Enhanced Warranty Scheme, ***"To qualify for the extended warranty period all engineers including sub-contractors routinely working on Toshiba air conditioning equipment shall have a current training course cardholder registration number (valid for 3 years from date of issue and subject to attendance for any new or later generation equipment training courses) and must have completed the RAV DI/SDI - (T2), VRF - (T3), and Controls - (TCC9) technical training courses."***

Delegates must **physically** attend a VRF (T3) course, the RAV DI/SDI (T2) and the Controls (TCC9) can be completed either in person through one of our scheduled sessions, or via the **Toshiba** on-line training portal, **Toshiba** online training registration form available on page 26 of this publication.

To assist our customers in achieving the required training commitment, Cool Designs have increased the quantity of VRF (T3) courses being held at one of our dedicated interactive training facilities located in Warrington, Gateshead and Glasgow.

To facilitate our South of England customers requirements, we have allocated dates for sessions to be held in your geographical area, (final locations to be confirmed nearer the scheduled dates), for more information please contact your local Cool Designs contact.

As well as the **Toshiba** VRF (T3) courses we are also offering scheduled DI/SDI (T2) and Controls (TCC9) courses.

In addition to the **Toshiba** courses offered, we also offer **Fujitsu** VRF (F3) and **Fujitsu** "Splits" (F2) also held at one of our dedicated interactive facilities, Alternatively If you would prefer we can make arrangements for our customers to attend **Fujitsu's** training sessions held at their Elstree Training Facility.

Not only have we increased the number of core courses available, we also offer additional bespoke training courses on request.

If none of the above options are suitable for your organization we can, on request and by appointment,

**"Bring the training and trainer" to you!** (Excludes "Hands On Courses"),  
a minimum quantity of 5 people per session would be required.

**"A well trained workforce increases a companies profitability."**

And best of all, ALL **Cool Designs** training courses are

**"FREE OF CHARGE—With NO Catches!"**

Cool Designs Ltd

Raising the Standards in Air Conditioning Distribution

[www.cdlweb.info](http://www.cdlweb.info)





### Core Courses Available;

Introduction to the product range, available for **Toshiba** (T1) and **Fujitsu** (F1) products, (On Request)

Installation, Commissioning and Servicing, available for **Toshiba** (T2) and **Fujitsu** (F2) residential and light commercial (Split's) products.

VRF system application and design, available for **Toshiba** and **Fujitsu** products (VRF4).

VRF Installation, Commissioning and Servicing, available for **Toshiba** (T3) and **Fujitsu** (F3) products.

Air to Water system design and application, available for **Toshiba**, **Fujitsu** and **Panasonic** products (ATW5).

Air to Water system, Installation, Commissioning and Servicing, available for **Toshiba** and **Fujitsu** products.

In addition to the "Core" courses outlined above we can offer a wide range of speciality course, If you cannot see the course best suited to you or your staff please contact our training team to discuss.

All of our courses have been devised to ensure that we offer all our customers the product and development training they need. It also confirms our support to the industry in ensuring that high levels of professionalism are encouraged and maintained.

Delegates attending these courses will receive electronic copies of the presentation material, course notes, technical manuals, (Where applicable) a certificate of achievement, in addition on **Toshiba** courses a personal identification card, with unique reference, will be issued directly by **Toshiba** Air Conditioning, refreshments and lunch – [all free of charge.](#)

We are confident that you will find a course to suit you and your colleagues or staff requirements.

To register your interest in a course, simply complete the Training Application Request, pages 17, 20, 21, 22 or 23 of this publication, please select the one applicable to your geographical area and email to the address below.

Alternatively contact your Cool Designs sales contact or a member of our training team to discuss your requirements on;

**Tel: 07590 775 510 or via email: [support@cooldesignsltd.co.uk](mailto:support@cooldesignsltd.co.uk)**

**Please note** that all courses are on a first come first served basis. If we are over-subscribed we will contact you to arrange alternative training dates. Cool Designs Limited reserve the right to decline applications and to cancel / amend / substitute training dates – if this is necessary for any reason. One of our representatives will contact you at least 48 hours prior to the training date.



**Cool Designs Ltd**

Raising the Standards in Air Conditioning Distribution

[www.cdlweb.info](http://www.cdlweb.info)



**The TOSHIBA technical training programme for 2018 - 2019 contains 7 primary courses:-**

1. Residential & Light Commercial (RAS/DI/SDI) Installation and service [T2].
2. Commercial Range (VRF) Installation and Service [T3].
3. Commercial Range (VRF) Design & Application. [VRF4]
4. Refrigerant Leak Detection Systems.
5. TCC Controls [TCC9].
6. Air to Water (Estia).
7. Understanding Legislation & EUP Lot 10.

Duration of courses 1, 2 and 6 would be one working day, (per course).

Courses 3, 4, 5 and 7 being half day courses, (per course).

Quotation from **Toshiba's** additions Terms and Conditions.

“Toshiba’s Additions members are audited for technical excellence by Toshiba’s technical department, the audit includes their engineers having been trained on Toshiba’s current air conditioning products including installation, service and controls, (The three required courses are T2, T3 & TCC9)”

In January 2016 Toshiba launched an industry leading warranty scheme. Offering customers a 7 Year Enhanced warranty, (Fully Comprehensive Warranty (FCW)). To qualify for this enhancement FCW scheme all engineers and sub-contractors routinely working on Toshiba Air Conditioning equipment, shall have a current training course cardholder registration number (valid for 3 years) and must have completed the following training courses;

T2 (RAV), T3 (VRF) & TCC9 (Controls).

T5 Registered Installer



T7 Approved  
Warranty Partner



T7 Enhanced  
Warranty Partner



Cool Designs Ltd

Raising the Standards in Air Conditioning Distribution

[www.cdlweb.info](http://www.cdlweb.info)







**The **FUJITSU** training programme for 2018 - 2019 contains 10 courses:-**

<b>Course 1—An introduction to the Fujitsu Product Portfolio.</b>	<b>- 1 Day</b>
<b>Course 2—Split and Multi-Split Systems, Installation, Commissioning, Troubleshooting and Service Tool.</b>	<b>- 1 Day</b>
<b>Course 3—Mini VRF. Installation, Commissioning and Troubleshooting.</b>	<b>- 1 Day</b>
<b>Course 4— VRF System Application and Design Including Design Simulator.</b>	<b>- 1 Day</b>
<b>Course 5— VRF System Installation, Commissioning and Service Tool.</b>	<b>- 1 Day</b>
<b>Course 6— VRF Advanced Service and Troubleshooting Including Service Tool.</b>	<b>- 1 Day</b>
<b>Course 7— VRF Central Controllers, Installation and Commissioning.</b>	<b>- 1 Day</b>
<b>Course 8 - R32 - An insight to R32. Including, Installation, Commissioning and Troubleshooting</b>	<b>- 1 Day</b>
<b>Course 9— ATW System. Product overview, Installation, Commissioning and Troubleshooting.</b>	<b>- 1 Day</b>
<b>Course 10— AHU DX Kit and Freeverter Options. Design, Installation and Commissioning.</b>	<b>- 1 Day</b>

**Cool Designs** are please to be able, in cooperation with **Fujitsu** air conditioning, to offer courses 1, 2, 4 and 5, in our facilities at Warrington, Gateshead and Glasgow.

Alternatively, arrangements can be made for **Cool Designs** customers to attend **Fujitsu's** dedicated training facility in Elstree Hertfordshire, full details available on request.

**Quotation from Fujitsu's Comfort-club Terms and Conditions.**

**"Free training (Compulsory attendance of 2 or 3\* days training per fiscal year)  
All "Installation and Commissioning", "Installation, Commissioning and Troubleshooting"  
and "Advanced Service and Troubleshooting" training courses to be attended by F-gas  
Registered Engineers only. (Proof of registration required before attendance)"**



**Cool Designs Ltd**

Raising the Standards in Air Conditioning Distribution

[www.cdlweb.info](http://www.cdlweb.info)



## **Course Reference: T1**

An introduction to the complete range of **Toshiba** Air Conditioning and Air to Water systems.

This theory based course is suitable for anyone who is not familiar with the latest **Toshiba** air conditioning and air to water R410A products.

### **•Air to Water Range.**

Estia	Standard Split Type	Single Phase 8kW to 14kW Three Phase 11kW to 16kW
	High Temperature Split Type	Single Phase 8kW and 11kW
	Monobloc	Three Phase 17kW and 21kW

### **•Residential Range.**

Daiseikai range of single.  
Single systems, R410A & R32 high wall - Mirai, Shorai, Bi-flow Console  
Multi split systems, high wall, Bi-flow, ducted and 600 x 600 cassettes.

### **•Commercial Range.**

Digital Inverter R410A & R32 from 2.5kW to 28kW, R410A & R32  
Super Digital Inverter R410A & R32 from 4kW to 16kW, R410A & R32

### **•VRF Range.**

MINI-VRF R410A, two pipe heat pump, 4 hp(12.5kW), 5 hp(16kW), 6 hp(18kW), R410A  
SMMSe two pipe heat pump R410A, 8 hp (25kW) – 60 hp (178kW), R410A  
SHRMe, three pipe heat recovery R410A, 8 hp (25kW) – 42 hp (132kW), R410A  
Over 110 indoor units compatible with the three options above.  
Control options available

Training will commence at 9.30 am and conclude at 1.30 pm.  
Course materials and refreshments will be provided free-of-charge.

Minimum quantity of delegates 4  
Maximum quantity of delegates 16\*

Course available on request, subject to quantity of delegates.





## **Course Reference: F1**

An introduction to the complete range of **Fujitsu** Air Conditioning and air to water systems.

This module is suitable for anyone who is not familiar with the latest **Fujitsu** air conditioning and air to water products.

### **•Split.**

Single Split Systems from 2.2kW to 25kW  
Wall Mounted, Compact Cassette, Standard Cassette, Circular Flow Cassette,  
Floor, Floor/Ceiling, Ceiling, Slim Duct,  
Duct, Medium Static Duct, High Static Duct, Big Duct.

### **•Multi Split**

Multi Split options from 2 Indoor units to 6 indoor units 4kW to 12.5kW  
Commercial Simultaneous Multi Twin, Triple & Quad systems 10kW to 22kW

### **•VRF Range.**

J-Series MINI-VRF, 2 pipe heat pump, 4 hp(12.1kW) - 16 hp(45kW)  
V-III 2 Pipe VRF, 2 pipe heat pump, 8 hp (25kW) – 54 hp (150kW)  
VR-II 3 pipe VRF heat recovery, 8 hp (25kW) – 48 hp (150kW)  
With 14 types and 81 models compatible with the three options above.  
Assorted control options.

Training will commence at 9.30 am and conclude at 1.30 pm.  
Course materials and refreshments will be provided free-of-charge

Minimum quantity of delegates 4  
Maximum quantity of delegates 16\*

Course available on request, subject to quantity of delegates.



Cool Designs Ltd

Raising the Standards in Air Conditioning Distribution

[www.cdlweb.info](http://www.cdlweb.info)



## Course Reference: T2

An in-depth course covering Installation, Commissioning, Service and Maintenance of the **Toshiba** residential and commercial R32 & R410A products.

This course is theory based and is aimed at installation, commissioning and service engineers, with a prior knowledge of air conditioning products and the principles of air conditioning.

All delegates must be F-gas or equivalent registered.

### **This course covers;**

- **Product overview.**
- **Refrigeration circuitry, R32 & R410A Refrigerant and current legislation, pressure testing, dehydration and refrigerant charging.**
- **Electrical circuitry, including Inverter technology.**
- **Commissioning.**
- **Service and maintenance requirements.**
- **Component layout and fault finding including data retrieval.**
- **Overview of Control options.**

Upon satisfactory completion of a written examination a certificate of achievement will be issued by CDL and a personal identity card by **Toshiba** Air Conditioning.

For companies who are enrolled into the **Toshiba** Enhanced Warranty scheme, part of that agreement being that their staff will complete a number of training courses, (T2, T3 & TCC9), the above course forms apart of this agreement.

**Cool Designs Ltd are an authorised training facility for and on behalf of  
Toshiba Air Conditioning.**

Training will commence at 9.30 am and conclude at 4.30 pm.  
Course materials and refreshments will be provided free-of-charge.

Minimum quantity of delegates 4  
Maximum quantity of delegates 16\*

For available courses in your area please refer to the schedule section, page 19 of this publication.

**Cool Designs Ltd**

Raising the Standards in Air Conditioning Distribution

[www.cdlweb.info](http://www.cdlweb.info)







## **Course Reference: F2**

An in-depth course covering Installation, Commissioning and Troubleshooting of **Fujitsu** Split and Multi-Split type systems.

This **theory based** course is valuable for anyone involved in the installation, Commissioning of **Fujitsu** Split and Multi-Split type systems and is aimed at Installation / Commissioning engineers, with a prior knowledge of air conditioning products and the principles of air conditioning.

**All delegates must be F-gas or equivalent registered.**

## **Course Summary:**

- Introduction to the current product range.
- Explanation of terms and technologies (e.g. Inverters, double swing louvres etc.)
- Review of refrigerant and electrical circuit diagrams and basic operation principles.
- Pipe work, interconnecting cable and control methods.
- Remote controller types– functions, setting up, fault codes.
- Fault finding review.
- Introduction to the new fault finding application.
- Questions and Answers.

Upon satisfactory completion of a written examination a certificate of achievement will be issued.

For companies who are enrolled into the **Fujitsu** Comfort club scheme, part of that agreement being that their staff will complete a number of training courses, the above course forms apart of this agreement.

**Cool Designs Ltd are an authorised training facility for and on behalf of  
Fujitsu Air Conditioning.**

Training will commence at 9.30 am and conclude at 4.30 pm.  
Course materials and refreshments will be provided free-of-charge

Minimum quantity of delegates 4  
Maximum quantity of delegates 16\*

Course available on request, subject to quantity of delegates.



**Cool Designs Ltd**

Raising the Standards in Air Conditioning Distribution

[www.cdlweb.info](http://www.cdlweb.info)



### Course Reference: T3

An in-depth course on **Toshiba** VRF equipment,

This course is **theory based** and is aimed at installation, commissioning and service engineers, with a prior knowledge of VRF air conditioning equipment and the principles of air conditioning. **All delegates must be F-gas or equivalent registered.**

This course covers;

- Product overview, Including the new award winning, mini VRF, SMMSe & SHRMe Range.
- Installation, Refrigeration circuitry, R410A refrigerant and current legislation, pressure testing, dehydration and refrigerant charging.
- Electrical installation.
- Commissioning the systems.
- Service and maintenance requirements.
- Data retrieval and service functions.
- Component testing.
- Fault finding including fault codes.
- Overview of Control options.
- A physical run through of the automatic addressing facility will be carried out on the installed equipment within the training facility.

Upon satisfactory completion of a written examination a certificate of achievement will be issued by CDL and a personal identity card by **Toshiba** Air Conditioning.

For companies who are enrolled into the **Toshiba** Enhanced Warranty scheme, part of that agreement being that their staff will complete a number of training courses, (T2, T3 & TCC9), the above course forms apart of this agreement.

**Cool Designs Ltd are an authorised training facility for and on behalf of  
Toshiba Air Conditioning.**

Training will commence at 9.30 am and conclude at 4.30 pm.  
Course materials and refreshments will be provided free-of-charge

Minimum quantity of delegates 4  
Maximum quantity of delegates 16\*

For available courses in your area please refer to the schedule section, page 19 of this publication.

**Cool Designs Ltd**

Raising the Standards in Air Conditioning Distribution

[www.cdlweb.info](http://www.cdlweb.info)





### **Course Reference: F3**

**An in-depth course covering the Installation and Commissioning of a Fujitsu VRF system.**

This **theory based** course is valuable for anyone involved in the installation, Commissioning of **Fujitsu** VRF type systems and is aimed at Installation / Commissioning engineers, with a prior knowledge of VRF systems and the principles of air conditioning. **All delegates must be F-gas or equivalent registered.**

#### **Course Summary:**

- Understanding the limitations of the system.
- Understanding pipe work design.
- Understanding the systems power supply requirements.
- Understanding the recommended installation procedures.
- Calculating the systems refrigerant charge.
- Set-up the systems address configuration of outdoor and indoor units.
- Understanding how to start up the system and test run.
- Learn how to avoid common mistakes.
- Introduction to the new fault finding application.

Upon satisfactory completion of a written examination a certificate of achievement will be issued.

For companies who are enrolled into the **Fujitsu** Comfort club scheme, part of that agreement being that their staff will complete a number of training courses, the above course forms apart of this agreement.

**Cool Designs Ltd are an authorised training facility for and on behalf of  
Fujitsu Air Conditioning.**

Training will commence at 9.30 am and conclude at 4.30 pm.  
Course materials and refreshments will be provided free-of-charge

Minimum quantity of delegates 4  
Maximum quantity of delegates 16\*

Course available on request, subject to quantity of delegates.



**Cool Designs Ltd**

Raising the Standards in Air Conditioning Distribution

[www.cdlweb.info](http://www.cdlweb.info)



## **Course Reference: VRF4**

### **VRF Application and Design.**

A course specifically designed for anyone involved in the design and application of VRF systems and encompasses two major VRF manufacturers equipment and tools.

**TOSHIBA**  
Leading Innovation >>>

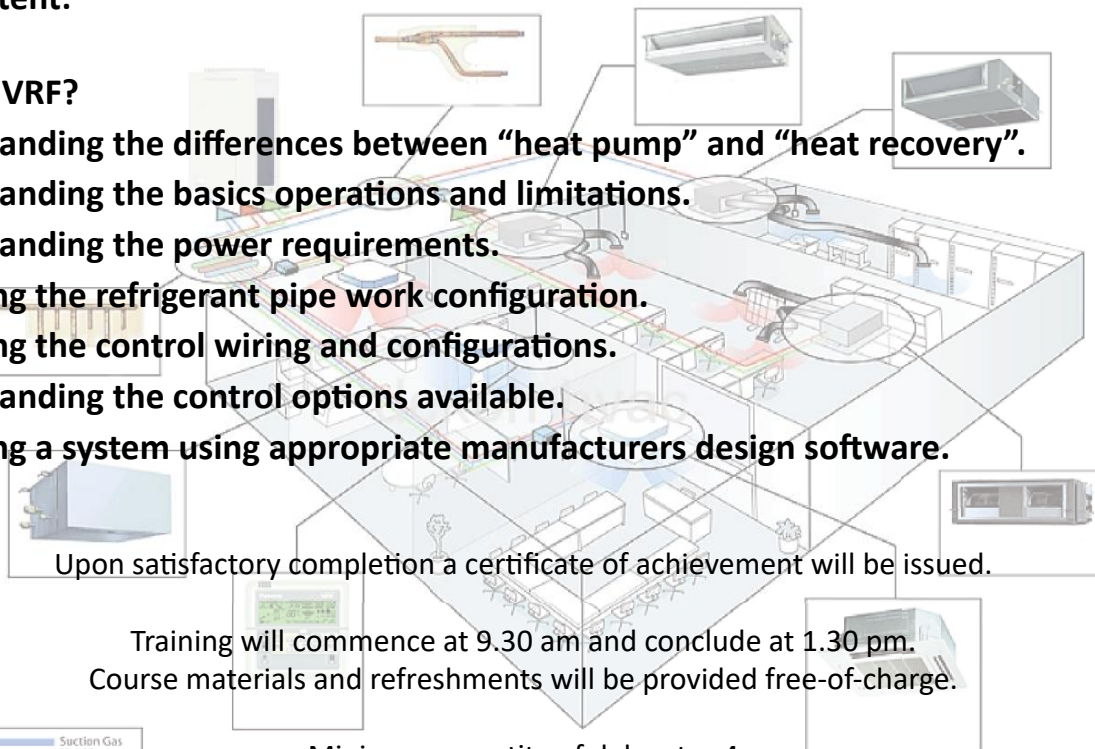
**FUJITSU**  
AIR CONDITIONING

A half day **theory based** course, outlining the differences between “Heat Pump and Heat Recovery” design and application, how to get the best out of a design, the course also incorporates the correct use of manufacturers selection/application/design software.

**Please note, load calculations are NOT included.**

### **Course Content:**

- What is VRF?
- Understanding the differences between “heat pump” and “heat recovery”.
- Understanding the basics operations and limitations.
- Understanding the power requirements.
- Designing the refrigerant pipe work configuration.
- Designing the control wiring and configurations.
- Understanding the control options available.
- Designing a system using appropriate manufacturers design software.



Upon satisfactory completion a certificate of achievement will be issued.

Training will commence at 9.30 am and conclude at 1.30 pm.  
Course materials and refreshments will be provided free-of-charge.

Minimum quantity of delegates 4  
Maximum quantity of delegates 16\*

Course available on request, subject to quantity of delegates.

**Cool Designs Ltd**

Raising the Standards in Air Conditioning Distribution

[www.cdlweb.info](http://www.cdlweb.info)







## **Course Reference: ATW 5**

### **Air to Water Application and Design.**

A course specifically designed for anyone involved in the design and application of Air to Water systems and encompasses three major manufacturers equipment and tools.

**TOSHIBA**  
Leading Innovation >>>

**FUJITSU**  
AIR CONDITIONING

**Panasonic**  
ideas for life

A half day **theory based** course, outlining the “pros and cons” associated with the design and application of Air to Water products the course also incorporates the correct use of manufacturers selection/application/design software.

**Please note, load calculations are NOT included.**

### **Course Content:**

- What are Air to Water systems.
- Understanding the basics of air to water systems.
- How to apply and where to apply Air to Water systems.
- Understanding the basics operations and limitations.
- Understanding the power requirements.
- How to select the correct style of system, Mono-Block or Bi-block.
- Understanding the control options available.
- Designing a system using appropriate manufacturers design software.

Upon satisfactory completion a certificate of achievement will be issued.

Training will commence at 9.30 am and conclude at 1.30 pm.  
Course materials and refreshments will be provided free-of-charge.

Minimum quantity of delegates 4  
Maximum quantity of delegates 16\*

Course available on request, subject to quantity of delegates.



**Cool Designs Ltd**

Raising the Standards in Air Conditioning Distribution

[www.cdlweb.info](http://www.cdlweb.info)



**Course Reference: TRL7**

**Refrigerant leak detection systems**

This half day theory based course covers the application, installation and service/maintenance of **Toshiba's** award winning refrigerant leak detection systems. Covering products LD1, LD2, RD6, outlining which elements meet either BS EN378 and or complies with BREEAM.

- Complying with legislation including BS EN378 & BREEAM.
- **Toshiba** leak detection product overview.
- Selecting leak detection products.
- Benefits and application of leak detection.
- Utilising the LD1, LD2 to comply with F-gas directive.
- Installation & commissioning.
- Service & maintenance.

Upon satisfactory completion a certificate of achievement will be issued.

Training will commence at 9.30 am and conclude at 1.30 pm.  
Course materials and refreshments will be provided free-of-charge

Minimum quantity of delegates 4  
Maximum quantity of delegates 16\*

Course available on request, subject to quantity of delegates.



**Cool Designs Ltd**

Raising the Standards in Air Conditioning Distribution

[www.cdlweb.info](http://www.cdlweb.info)



**Course Reference: TCC9**

**Toshiba TCC Link Controls**

This half day theory & practical course covers the application, installation and service of **Toshiba's** TCC Link control options, from an overview of control options to how to integrate **Toshiba** equipment into third party control solutions.

The day will take in the theory of controls through to the actual configuration of some of the control options available.

- Theory and practical course.
- Overview of Toshiba control products.
- Overview of Toshiba integration to third party systems.  
Including "Intensis home" integration.
- Network principles.
- Addressing techniques.
- Integrating BMS technology.
- Practical training on control products including central control, including the new Smart Touch Screen, smart manager & BMS products.

Upon satisfactory completion of a written examination a certificate of achievement will be issued by CDL and a personal identity card by **Toshiba** Air Conditioning.

For companies who are enrolled into the **Toshiba** Enhanced Warranty scheme, part of that agreement being that their staff will complete a number of training courses, (T2, T3 & TCC9), the above course forms apart of this agreement.

**Cool Designs Ltd are an authorised training facility for and on behalf of  
Toshiba Air Conditioning.**

Training will commence at 9.30 am and conclude at 1.30 pm.  
Course materials and refreshments will be provided free-of-charge.

Minimum quantity of delegates 4  
Maximum quantity of delegates 16\*

For available courses in your area please refer to the schedule section, page 19 of this publication.





## **Course Reference: TLot10**

### **Understanding Legislation & EUP Lot 10**

This half day **theory based** course is intended to clarify current legislation and EUP Lot10 applicable to the UK Air Conditioning industry and is best suited for designers, application engineers, project engineers, senior engineers and business owners.

- **Overview of current legislation in relation to air conditioning products**
- **Overview of current legislation in relation to air to water products.**
- **Lot 10 and what it means**
- **Legislation under consideration.**
- **How to interpret system performance based on new criteria**
- **Analysis of the impact of current & proposed legislation on Air conditioning system.**

Upon satisfactory completion a certificate of achievement will be issued.

Training will commence at 9.30 am and conclude at 1.30 pm.  
Course materials and refreshments will be provided free-of-charge.

Minimum quantity of delegates 4  
Maximum quantity of delegates 16\*

Course available on request, subject to quantity of delegates.



**Cool Designs Ltd**

Raising the Standards in Air Conditioning Distribution

[www.cdlweb.info](http://www.cdlweb.info)





## “Hands On Courses”

We offer “Hands On” courses at our Warrington, Gateshead and Glasgow facilities.

The courses are intended for all installation/service/maintenance engineers working with **Toshiba** air conditioning equipment.

The courses will be held on Friday mornings and will comprise of:

Option 1- Fault finding on **Toshiba** two/three pipe VRF System.

Option 2—Setting up a **Toshiba** VRF system, how to erase settings and re-address a system.

Option 3—Getting the most out of **Toshiba** controls, control options covered, RBC-AMT32/ AMS41/AMS54/AMS55, RBC-TBPTS (Colour Touch Screen Central Controller).

Option 4—Working with Aluminium Pipe Work (Aluminium pipe is approved by **Toshiba** air conditioning.)

Please note, The above courses are of a “hands on” nature, delegates attending should be suitable attired with appropriate PPE for the work being undertaken.

Cool Designs Ltd whilst taking all relevant protective measures cannot be held liable or responsible for injuries incurred whilst attending the training session.

Training will commence at 9.30 am and conclude at 12.30 pm.  
Course materials and refreshments will be provided free-of-charge.

Minimum quantity of delegates 3  
Maximum quantity of delegates 8

Courses are subject to minimum quantities.

Cool Designs Ltd

Raising the Standards in Air Conditioning Distribution

[www.cdlweb.info](http://www.cdlweb.info)





## “Hands On Training” Registration Request.

<b>Company:</b>			
<b>Contact Name:</b>		<b>Position:</b>	
<b>Telephone:</b>		<b>Fax:</b>	
<b>Contact E-Mail:</b>			
Course Details			Qty. of Places Required
<b>Option 1</b>	Toshiba VRF System Fault Finding	— Warrington	
<b>Option 1</b>	Toshiba VRF System Fault Finding	— Gateshead	
<b>Option 1</b>	Toshiba VRF System Fault Finding	— Glasgow	
<b>Option 2</b>	Setting up Toshiba VRF System	— Warrington	
<b>Option 2</b>	Setting up Toshiba VRF System	— Gateshead	
<b>Option 2</b>	Setting up Toshiba VRF System	— Glasgow	
<b>Option 3</b>	Toshiba Remote Controls	— Warrington	
<b>Option 3</b>	Toshiba Remote Controls	— Gateshead	
<b>Option 3</b>	Toshiba Remote Controls	— Glasgow	
<b>Option 4</b>	Working with Aluminium Pipe	— Warrington	
<b>Option 4</b>	Working with Aluminium Pipe	— Gateshead	
<b>Option 4</b>	Working with Aluminium Pipe	— Glasgow	

On receipt of completed forms a member of our training team will contact the sender, offering suitable dates for the requested course. Cool Designs will make all efforts to meet your requirements wherever possible, we would recommend completing and returning this form as soon as possible.

Hands on training courses have limited spaces, as such Cool Designs will be operating a “First Come First Served” process, date and/or time of fax or email being the reference.

Training courses offered by Cool Designs Ltd, are free of charge, as places are limited per session, we reserve the right to charge £50 per head for **NON ATTENDANCE** with **NO** prior notification (48 Hours)

This form is an “Editable” form, please enter your details and the quantity of places required then email to;

**support@cooldesignsltd.co.uk**

Full terms and conditions are available at the end of this publication.



**Cool Designs Ltd**

Raising the Standards in Air Conditioning Distribution

[www.cdlweb.info](http://www.cdlweb.info)



Based on customer feed-back, we have restructured our training calendar for 2018 - 2019, for Warrington and Gateshead training, courses will be held on **Wednesday's**, (09.30am to 4.30pm unless specified differently).

Glasgow courses will be held on **Thursday's**, (09.30am to 4.30pm unless specified differently).

**"TCC Link Controls"** courses are 09.30am to 13.30pm)

**"Hands on"** courses will be held on **Friday's**, (09.30am to 1.30pm unless specified differently).

Design / Application and **Fujitsu** courses will be scheduled based on demand, please refer to the relevant course for start and finish times, minimum and maximum quantities will apply, once we receive sufficient requests we will contact the respective applicants advising of the dates allocated to each course, we are aiming to provide this notification approx. Two weeks ahead of the scheduled date.

**Details of the scheduled courses are on the next page.**

If the dates offered don't suit your work schedule, please contact us so that we can see what we can re-schedule. Where ever possible we will do our best to meet our customer's requests.

For the "Core" **Toshiba** courses we have scheduled the following sessions;

Where ever possible we will do our best to meet our customer's requests.





Course	Location	Date	Location	Date
T3 - Toshiba VRF	Warrington	10-10-18		
	Gateshead	17-10-18	Glasgow	18-10-18
T2 - Toshiba Residential & Commercial	Warrington	24-10-18		
	Gateshead	31-10-18	Glasgow	01-11-18
TCC9 - Toshiba TCCJ Controls	Warrington	07-11-18		
	Gateshead	14-11-18	Glasgow	15-11-18
T3 - Toshiba VRF	Location to be advised	21-11-18		
	Location to be advised	28-11-18		
T3 - Toshiba VRF	Warrington	05-12-18		
	Gateshead	12-12-18	Glasgow	13-12-18
T2 - Toshiba Residential & Commercial	Warrington	16-01-19		
	Gateshead	23-01-19	Glasgow	24-01-19
TCC9 - Toshiba TCCJ Controls	Warrington	30-01-19		
	Gateshead	06-02-19	Glasgow	07-02-19
T3 - Toshiba VRF	Warrington	13-02-19		
	Gateshead	20-02-19	Glasgow	21-02-19
T3 - Toshiba VRF	Warrington	27-02-19		
	Gateshead	06-03-19	Glasgow	07-03-19
T2 - Toshiba Residential & Commercial	Warrington	13-03-19		
	Gateshead	20-03-19	Glasgow	21-03-19
TCC9 - Toshiba TCCJ Controls	Warrington	27-03-19		
	Gateshead	10-04-19	Glasgow	11-04-19
T3 - Toshiba VRF	Location to be advised	17-04-19		
	Location to be advised	01-05-19		
T3 - Toshiba VRF	Warrington	08-05-19		
	Gateshead	15-05-19	Glasgow	16-05-19
T2 - Toshiba Residential & Commercial	Warrington	22-05-19		
	Gateshead	05-06-19	Glasgow	06-06-19
TCC9 - Toshiba TCCJ Controls	Warrington	12-06-19		
	Gateshead	19-06-19	Glasgow	20-06-19

**Please note** that all courses are on a first come first served basis. If we are over-subscribed we will contact you to arrange alternative training dates. Cool Designs Limited reserve the right to decline applications and to cancel / amend / substitute training dates – if this is necessary for any reason. One of our representatives will contact you at least 48 hours prior to the training date.



[www.cdlweb.info](http://www.cdlweb.info)



## Cool Designs Ltd

Raising the Standards in Air Conditioning Distribution





## Training Application Request.

<b>Company:</b>			
<b>Contact Name:</b>			<b>Position:</b>
<b>Telephone:</b>		<b>Fax:</b>	
<b>Contact E-Mail:</b>			
Course Details		Date of Course (if listed?)	Quantity of Places Required
T3 - Toshiba VRF		10-10-18	
T2 - Toshiba Residential & Commercial		24-10-18	
TCC9 - Toshiba TCCJ Controls		07-11-18	
T3 - Toshiba VRF		05-12-18	
T2 - Toshiba Residential & Commercial		16-01-19	
TCC9 - Toshiba TCCJ Controls		30-01-19	
T3 - Toshiba VRF		13-02-19	
T3 - Toshiba VRF		27-02-19	
T2 - Toshiba Residential & Commercial		13-03-19	
TCC9 - Toshiba TCCJ Controls		27-03-19	
T3 - Toshiba VRF		08-05-19	
T2 - Toshiba Residential & Commercial		22-05-19	
TCC9 - Toshiba TCCJ Controls		12-06-19	

Training courses offered by Cool Designs Ltd are free of charge, as places are limited per session, we reserve the right to charge £50 per head for **NON-ATTENDANCE** with **NO** prior notification (48 hours).

**Confirmations will be issued approx two weeks ahead of the scheduled session.**

This form is an "Editable" form, please enter your details and the quantity of places required then email to;

**[support@cooldesignsltd.co.uk](mailto:support@cooldesignsltd.co.uk)**

Full terms and conditions are available at the end of this publication.

## Cool Designs Ltd

Raising the Standards in Air Conditioning Distribution

[www.cdlweb.info](http://www.cdlweb.info)





## Training Application Request.

<b>Company:</b>			
<b>Contact Name:</b>			<b>Position:</b>
<b>Telephone:</b>		<b>Fax:</b>	
<b>Contact E-Mail:</b>			
Course Details		Date of Course (if listed?)	Quantity of Places Required
T3 - Toshiba VRF		17-10-18	
T2 - Toshiba Residential & Commercial		31-10-18	
TCC9 - Toshiba TCCJ Controls		14-11-18	
T3 - Toshiba VRF		12-12-18	
T2 - Toshiba Residential & Commercial		23-01-19	
TCC9 - Toshiba TCCJ Controls		06-02-19	
T3 - Toshiba VRF		20-02-19	
T3 - Toshiba VRF		06-03-19	
T2 - Toshiba Residential & Commercial		20-03-19	
TCC9 - Toshiba TCCJ Controls		10-04-19	
T3 - Toshiba VRF		15-05-19	
T2 - Toshiba Residential & Commercial		05-06-19	
TCC9 - Toshiba TCCJ Controls		19-06-19	

Training courses offered by Cool Designs Ltd are free of charge, as places are limited per session, we reserve the right to charge £50 per head for **NON-ATTENDANCE** with **NO** prior notification (48 hours).

**Confirmations will be issued approx two weeks ahead of the scheduled session.**

This form is an "Editable" form, please enter your details and the quantity of places required then email to;

**[support@cooldesignsltd.co.uk](mailto:support@cooldesignsltd.co.uk)**

Full terms and conditions are available at the end of this publication.

## Cool Designs Ltd

Raising the Standards in Air Conditioning Distribution

[www.cdlweb.info](http://www.cdlweb.info)





## Training Application Request.

<b>Company:</b>			
<b>Contact Name:</b>		<b>Position:</b>	
<b>Telephone:</b>		<b>Fax:</b>	
<b>Contact E-Mail:</b>			
Course Details	Date of Course (if listed?)	Quantity of Places Required	
T3 - Toshiba VRF	18-10-18		
T2 - Toshiba Residential & Commercial	01-11-18		
TCC9 - Toshiba TCCJ Controls	15-11-18		
T3 - Toshiba VRF	13-12-18		
T2 - Toshiba Residential & Commercial	24-01-19		
TCC9 - Toshiba TCCJ Controls	07-02-19		
T3 - Toshiba VRF	21-02-19		
T3 - Toshiba VRF	07-03-19		
T2 - Toshiba Residential & Commercial	21-03-19		
TCC9 - Toshiba TCCJ Controls	11-04-19		
T3 - Toshiba VRF	16-05-19		
T2 - Toshiba Residential & Commercial	06-06-19		
TCC9 - Toshiba TCCJ Controls	20-06-19		

Training courses offered by Cool Designs Ltd are free of charge, as places are limited per session, we reserve the right to charge £50 per head for **NON-ATTENDANCE** with **NO** prior notification (48 hours).

**Confirmations will be issued approx two weeks ahead of the scheduled session.**

This form is an "Editable" form, please enter your details and the quantity of places required then email to;

**[support@cooldesignsltd.co.uk](mailto:support@cooldesignsltd.co.uk)**

Full terms and conditions are available at the end of this publication.

## Cool Designs Ltd

Raising the Standards in Air Conditioning Distribution

[www.cdlweb.info](http://www.cdlweb.info)





## Training Application Request.

<b>Company:</b>			
<b>Contact Name:</b>		<b>Position:</b>	
<b>Telephone:</b>		<b>Fax:</b>	
<b>Contact E-Mail:</b>			
Course Details	Date of Course (if listed?)	Quantity of Places Required	
T3 - Toshiba VRF	21-11-18		
T3 - Toshiba VRF - (Course subject to change)	28-11-18		
T3 - Toshiba VRF - (Course subject to change)	17-04-19		
T3 - Toshiba VRF	01-05-19		

*Location will be either at **Toshiba's** training facility in Leatherhead, (Subject to availability), or a suitable venue within the geographical area, full details of the location will be issued prior to booking.*

*T3 courses scheduled for the 28-11-18 and 17-04-19, maybe changed from **Toshiba** T3 - VRF to either T2 - DI/SDI or TCC9 - Controls, dependant on demand.*

Training courses offered by Cool Designs Ltd are free of charge, as places are limited per session, we reserve the right to charge £50 per head for **NON-ATTENDANCE** with **NO** prior notification (48 hours).

**Confirmations will be issued approx two weeks ahead of the scheduled session.**

This form is an "Editable" form, please enter your details and the quantity of places required then email to;

**[support@cooldesignsltd.co.uk](mailto:support@cooldesignsltd.co.uk)**

Full terms and conditions are available at the end of this publication.

## Cool Designs Ltd

Raising the Standards in Air Conditioning Distribution

[www.cdlweb.info](http://www.cdlweb.info)







## Technical Training Suggestions

Whilst we believe our training syllabus covers the majority of elements associated with the products we sell, If you have a specific requirement for a technical training course which is not listed within this publication, please do not hesitate in dropping us an email and let us know what you require.

It maybe a course we are considering or we never thought about it? Either way once we know what it is we can investigate the feasibility of us offering it.

Our email address is:

**[support@cooldesignsltd.co.uk](mailto:support@cooldesignsltd.co.uk)**

Or if you just want to chat about your idea give us a call on:

**07590 775 510**

**Cool Designs Ltd**

Raising the Standards in Air Conditioning Distribution

[www.cdlweb.info](http://www.cdlweb.info)





## **Specific Requirements.**

Could requesting companies please advise our training team at the time of requesting places, of any special requirements associated with the delegate who may be attending one of our courses, these cover any specific;

### **Access, Audible, Visual or Dietary requirements.**

In the unlikely event that we are unable to meet these requirements, we shall contact the requesting company and advise them of the situation prior to the scheduled session.

## **Health and Safety.**

Whilst we take every precaution in respect to the safety and well being of all delegates attending any of our training sessions, we would advise that the delegates will be in a technical training facility which will have fully operational air conditioning or heat pump equipment as such we would recommend that all delegates are suitably attired with appropriate PPE (were applicable), for the work being undertaken.

Cool Designs Ltd, whilst taking all relevant protective measures cannot be held liable or responsible for injuries incurred whilst attending the training session.

## **General.**

Training courses will start at 9.30am and conclude at 4.30pm, unless specifically advised differently.

As spaces are limited, we operate a "First Come First Served" process, date and /or time of e-mail being the reference point.

Training courses offered by Cool Designs Ltd, are free of charge, as places are limited per session, we reserve the right to charge £50 per head for **NON-ATTENDANCE** with **NO** prior notification (**48 hours**).

Cool Designs or our authorised agents will **NOT** be liable for travel or accommodation costs unless authorise in writing prior to the scheduled dates, this applies to in-house or external training sessions.

We will contact requesting companies with confirmation of your request two weeks prior to the scheduled session, we will make all efforts to meet your requirements wherever possible, places are not guaranteed until the requester receives our confirmation.

A minimum quantity of delegates will be required per session, in the event of limited numbers we reserve the right to cancel or re-schedule any session.

Cool Designs Ltd, reserve the right to cancel, delete, amend or substitute any of the scheduled sessions contained within this publication.

Note: \* Warrington Facility Only



**Cool Designs Ltd**

Raising the Standards in Air Conditioning Distribution

[www.cdlweb.info](http://www.cdlweb.info)



### Online Training Application Form

#### Information Mandatory\*

<b>*Company:</b>		<b>Branch:</b>	
<b>*National Account:</b>			
Please state the Toshiba National account agreement your company is associated with, State if N/A			
<b>*Contact Name:</b>		<b>Position:</b>	
<b>*Company Address:</b>			
<b>*Telephone:</b>		<b>Fax:</b>	
<b>*Email:</b>			

Name of user (BLOCK CAPITALS)	User's email (BLOCK CAPITALS)

Please send this form to [Toshiba.training@toshiba-ac.com](mailto:Toshiba.training@toshiba-ac.com)



**TOSHIBA Air Conditioning Online Training Portal**

W: [www.training.toshibaac.co.uk](http://www.training.toshibaac.co.uk)  
E: [toshiba.training@toshiba-ac.com](mailto:toshiba.training@toshiba-ac.com)



Contact details;

## Cool Designs Ltd Technical Support

**07590 775 510 / 07706 293 028**

Toshiba Air Conditioning  
24/7 technical support

0870 843 0333 - Option 7

Text back service

07624 803 017

(Type fault code in lower case no spaces)



Cool Designs Ltd reserves the right to change the product specifications, data and images without prior notice

**Cool Designs Ltd**

Raising the Standards in Air Conditioning Distribution

[www.cdlweb.info](http://www.cdlweb.info)

