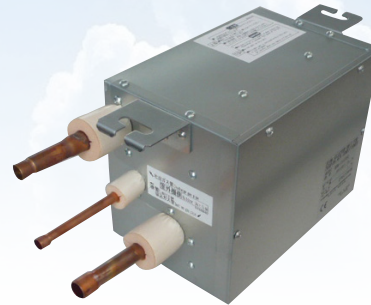


## Toshiba Air Conditioning - VRF Data Sheet

### RBM-Y2803FE Flow Selector Box

#### Features

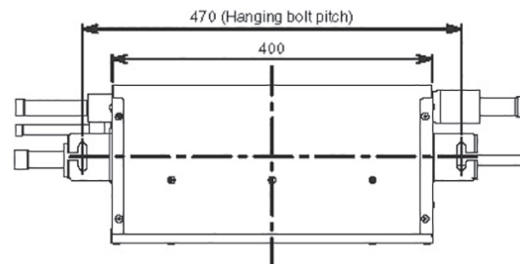
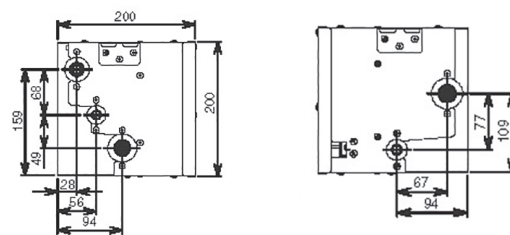
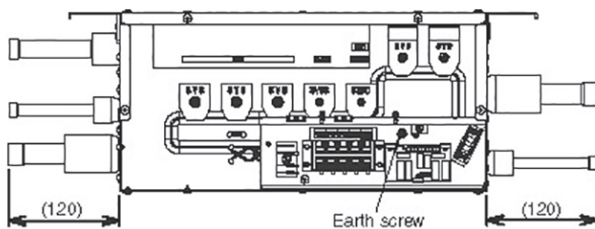
- Compact size, 200 x 640 x 200 mm
- Lightweight 8 kg
- Up to 8 indoor units from one Flow Selector Box
- All braze joints
- Easy service access



#### Technical Data

Model reference		RBM-Y2803FE
Power supply	V-ph-Hz	220/240-1-50
Connectable indoor capacity	HP	6.4 to below 10.0
Connectable indoor units	Qty	8
Dimensions (H x W x D)	mm	200 x 640 x 200
Unit weight	kg	8
Connection port diameter (indoor side)		Braze
Liquid pipe	inch	1/2
Suction pipe	inch	7/8
Connection port diameter (outdoor side)		Braze
Liquid pipe	inch	1/2
Discharge pipe	inch	3/4
Suction pipe	inch	7/8
Interconnecting cable (supplied)		
Power cable		3 core x 5 m
Communication cable		5 core x 5 m

#### Dimensional Drawings



Cool Designs Ltd

Raising the Standards in Air Conditioning Distribution

www.cdlweb.info

