

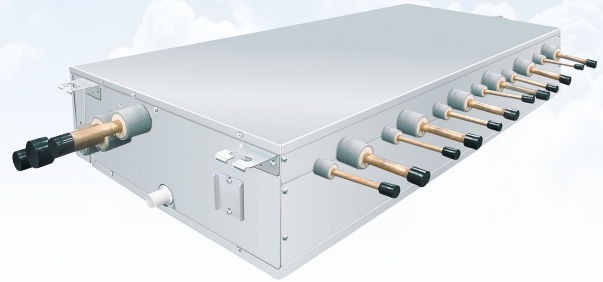
## Toshiba Air Conditioning - VRF Data Sheet

### RBM-Y1801F6PE

### 4 Series Multi-Port Flow Selector Box

#### Features

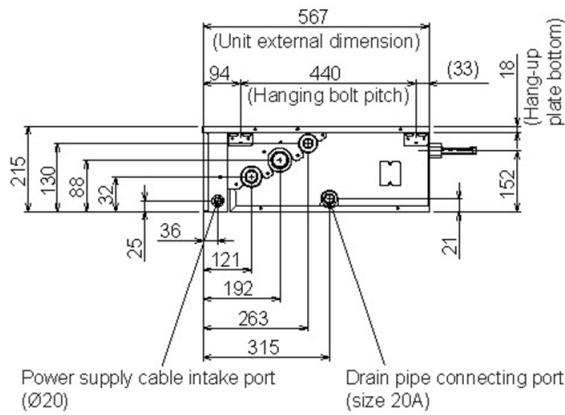
- 4- and 6-way boxes available
- 50 m pipe run per port
- Up to 60 indoor units from one Flow Selector Box
- Max. pipe length 180 m for 6-way box
- For use with SHRMe condensing units



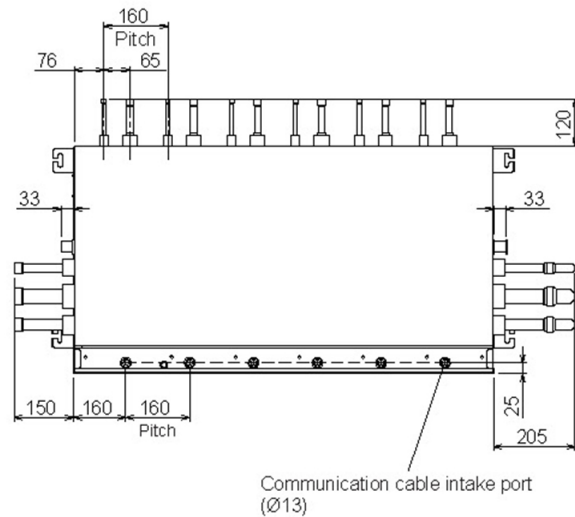
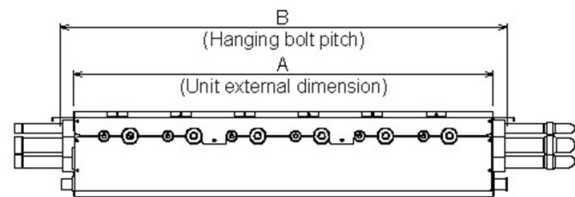
#### Technical Data

Model reference		RBM-Y1801F6PE
Power supply	V-ph-Hz	220/240-1-50
Connectable indoor capacity	HP	Below 6.4 per port
Connectable indoor units	Qty	10 per port
Dimensions (H x W x D)	mm	215 x 1477 x 687
Unit weight	kg	53
Connection port diameter		Braze
Interconnecting cable (supplied)		
Power cable		3 core
Communication cable		5 core

#### Dimensional Drawings



RBM-Y1801***	A	B
F4PE	730	802
F6PE	1,050	1,122



Cool Designs Ltd

Raising the Standards in Air Conditioning Distribution

www.cdlweb.info

