

Toshiba Air Conditioning - VRF Data Sheet

MMU-AP0562WH 2-way cassette

Features

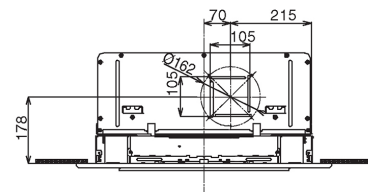
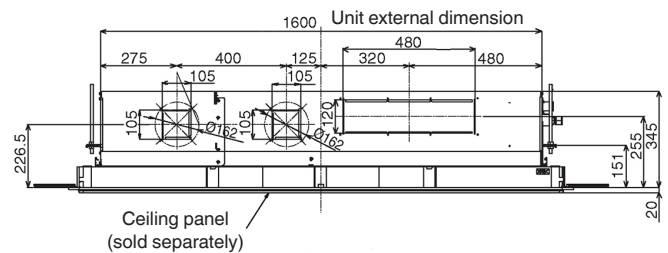
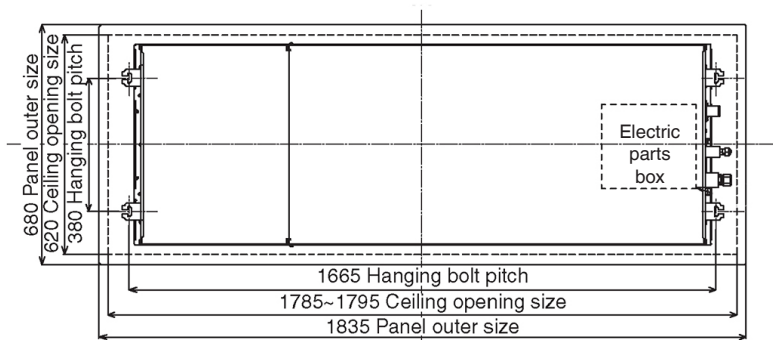
- Compact dimensions (height 345 mm - 4.5 to 16 kW)
- Unique air flow control
- Auxiliary fresh air intake
- Lift pump up to 425 mm lift
- Long life filters



Technical Data

Model reference		MMU-AP0562WH
Nominal cooling	kW	16.0
Nominal heating	kW	18.0
Capacity code		6.0
Power input (cool/heat)	kW	0.117
UK cooling	kW	15.38
UK sensible cooling	kW	11.53
UK heating	kW	14.58
Starting current	A	1.13
Running current	A	0.75
Suggested fuse size	A	5
Power supply	V-ph-Hz	220/240-1-50
Interconnecting cable		2-core screened 1.5 mm
Sound power H-M-L	dB(A)	61-57-54
Sound pressure H-L	dB(A)	46-39
Air flow H-L	m ³ /h	2040-1320
Air flow H-L	l/s	567-367
Dimensions (H x W x D)	mm	345 x 1600 x 570
Unit weight	kg	36
Panel reference		RBC-UW1403PG(W)-E
Panel dimensions (H x W x D)	mm	20 x 1835 x 680

Dimensional Drawings



Cool Designs Ltd

Raising the Standards in Air Conditioning Distribution

www.cdlweb.info

