

Toshiba Air Conditioning - VRF Data Sheet

MMU-AP0362WH 2-way cassette

Features

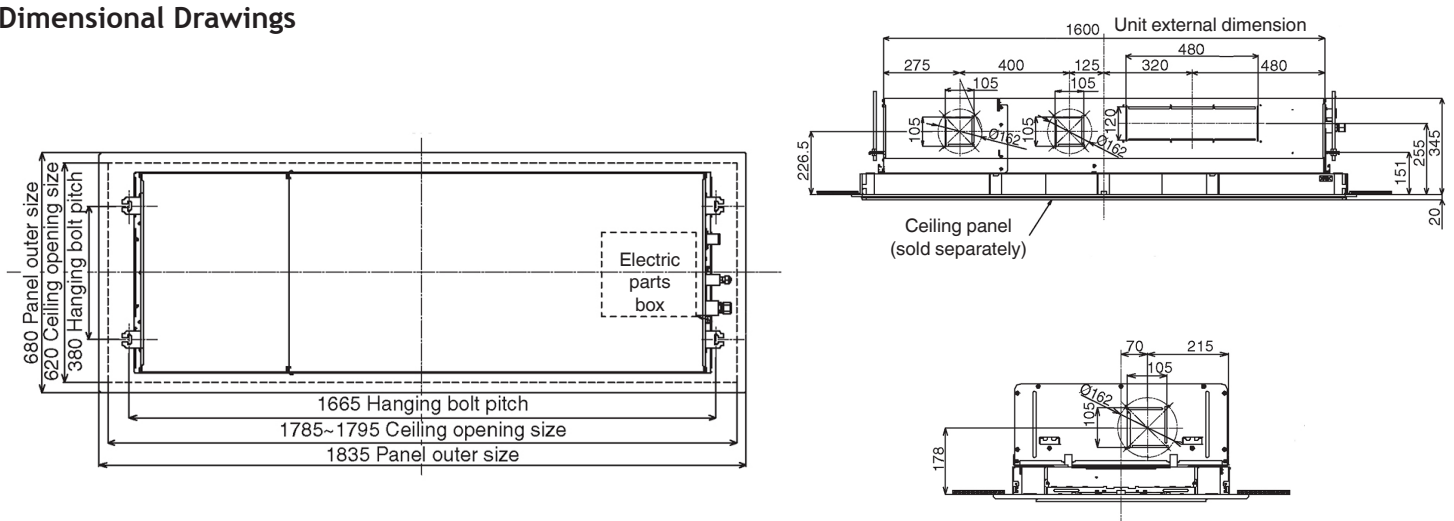
- Compact dimensions (height 345 mm - 4.5 to 16 kW)
- Unique air flow control
- Auxiliary fresh air intake
- Lift pump up to 425 mm lift
- Long life filters



Technical Data

Model reference		MMU-AP0362WH
Nominal cooling	kW	11.2
Nominal heating	kW	12.5
Capacity code		4.0
Power input (cool/heat)	kW	0.073
UK cooling	kW	10.77
UK sensible cooling	kW	8.84
UK heating	kW	10.13
Starting current	A	0.72
Running current	A	0.48
Suggested fuse size	A	5
Power supply	V-ph-Hz	220/240-1-50
Interconnecting cable		2-core screened 1.5 mm
Sound power H-M-L	dB(A)	57-54-51
Sound pressure H-L	dB(A)	42-36
Air flow H-L	m ³ /h	1740-1182
Air flow H-L	l/s	483-328
Dimensions (H x W x D)	mm	345 x 1180 x 570
Unit weight	kg	36
Panel reference		RBC-UW1403PG(W)-E
Panel dimensions (H x W x D)	mm	20 x 1835 x 680

Dimensional Drawings



Cool Designs Ltd

Raising the Standards in Air Conditioning Distribution

www.cdlweb.info

