

Toshiba Air Conditioning - VRF Data Sheet

MMU-AP0092WH 2-way cassette

Features

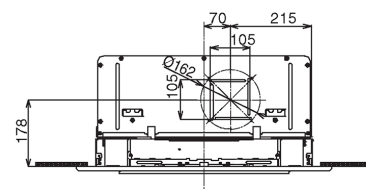
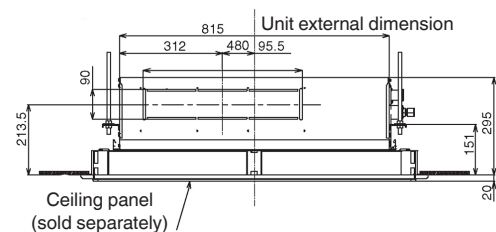
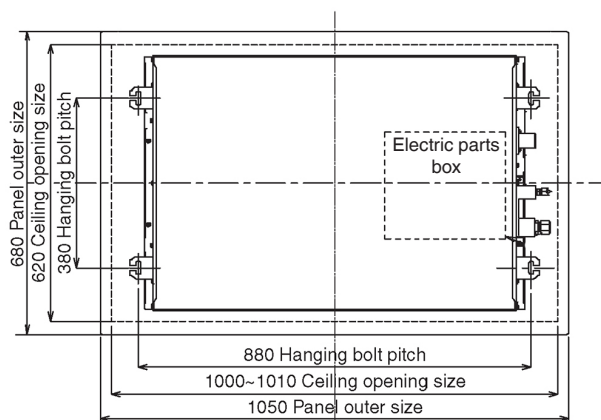
- Compact dimensions (height 295 mm - up to 4.5 kW)
- Unique air flow control
- Auxiliary fresh air intake
- Lift pump up to 425 mm lift
- Long life filters



Technical Data

Model reference		MMU-AP0092WH
Nominal cooling	kW	2.8
Nominal heating	kW	3.2
Capacity code		1.0
Power input (cool/heat)	kW	0.029
UK cooling	kW	2.69
UK sensible cooling	kW	2.02
UK heating	kW	2.59
Starting current	A	0.35
Running current	A	0.23
Suggested fuse size	A	5
Power supply	V-ph-Hz	220/240-1-50
Interconnecting cable		2-core screened 1.5 mm
Sound power H-M-L	dB(A)	49-47-45
Sound pressure H-L	dB(A)	34-30
Air flow H-L	m ³ /h	558-450
Air flow H-L	l/s	155-125
Dimensions (H x W x D)	mm	295 x 815 x 570
Unit weight	kg	19
Panel reference		RBC-UW283PG(W)-E
Panel dimensions (H x W x D)	mm	20 x 1050 x 680

Dimensional Drawings



Cool Designs Ltd

Raising the Standards in Air Conditioning Distribution

www.cdlweb.info

