

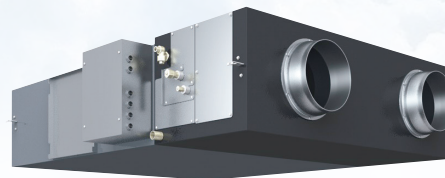
Toshiba Air Conditioning - Air-to-Air Heat Exchanger Data Sheet

MMD-VN802HEXE

Air-to-Air Heat Exchanger + DX Coil

Features

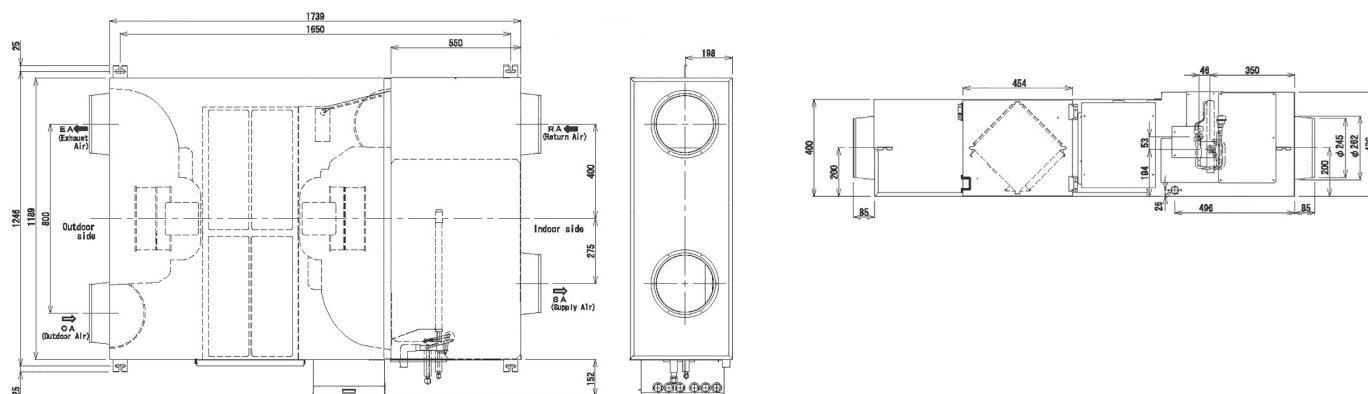
- Automatic changeover
- Recovery up to 83% of heat loss
- Complete with internal DX coil
- Free cooling when ambient temperature is lower than internal temperature
- Compatible with standard TCC link controls



Technical Data

Model reference		MMD-VN802HEXE
Fresh air conditioning load (cooling)	kW	6.56
Fresh air conditioning capacity (cooling)	kW	2.06
Fresh air conditioning load (heating)	kW	8.61
Fresh air conditioning capacity (heating)	kW	3.61
Temperature exchange efficiency (EH/H/L)	%	70/70/72.5
Enthalpy exchange efficiency - cooling (EH/H/L)	%	56/56/59
Enthalpy exchange efficiency - heating (EH/H/L)	%	70/70/73
Sound pressure (EH/H/L)	dB(A)	41/40/38
Air volume (EH/H/L)	m ³ /h	800/800/640
Power consumption (EH/H/L)	W	505/465/335
Maximum running current	A	2.25
Suggested fuse size	A	3
External static pressure (EH/H/L)	Pa	120/100/105
Heat exchanger (R410A)		Finned tube
Pipe sizes (liquid-suction)	inch	1/4-1/2
Drain port diameter	mm	25
Dimensions (H x W x D)	inch	430 x 1189 x 1739
Weight	kg	100
Power supply	V-ph-Hz	220/240-1-50
Duct diameter	mm	250
Operating range - around unit	°C	-10 to 40, RH ≤ 80%
Operating range - outdoor air	°C	-15 to 43, RH ≤ 80%
Operating range - return air	°C	5 to 40, RH ≤ 80%

Dimensional Drawings



Cool Designs Ltd

Raising the Standards in Air Conditioning Distribution

www.cdlweb.info

