

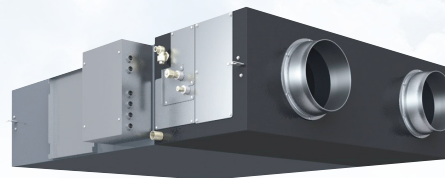
Toshiba Air Conditioning - Air-to-Air Heat Exchanger Data Sheet

MMD-VN502HEXE

Air-to-Air Heat Exchanger + DX Coil

Features

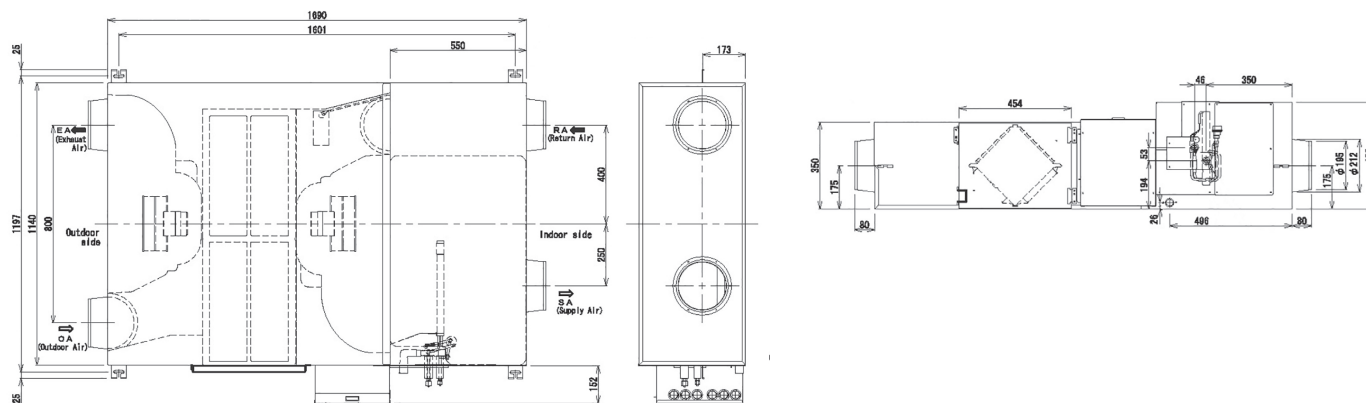
- Automatic changeover
- Recovery up to 83% of heat loss
- Complete with internal DX coil
- Free cooling when ambient temperature is lower than internal temperature
- Compatible with standard TCC link controls



Technical Data

| Model reference | | MMD-VN502HEXE |
|---|-------------------|---------------------|
| Fresh air conditioning load (cooling) | kW | 4.01 |
| Fresh air conditioning capacity (cooling) | kW | 1.3 |
| Fresh air conditioning load (heating) | kW | 5.3 |
| Fresh air conditioning capacity (heating) | kW | 2.33 |
| Temperature exchange efficiency (EH/H/L) | % | 70.5/70.5/71.5 |
| Enthalpy exchange efficiency - cooling (EH/H/L) | % | 56.5/56.5/57.5 |
| Enthalpy exchange efficiency - heating (EH/H/L) | % | 68.5/68.5/69 |
| Sound pressure (EH/H/L) | dB(A) | 37.5/36.5/34.5 |
| Air volume (EH/H/L) | m ³ /h | 500/500/440 |
| Power consumption (EH/H/L) | W | 300/280/235 |
| Maximum running current | A | 1.3 |
| Suggested fuse size | A | 3 |
| External static pressure (EH/H/L) | Pa | 120/105/115 |
| Heat exchanger (R410A) | | Finned tube |
| Pipe sizes (liquid-suction) | inch | 1/4-3/8 |
| Drain port diameter | mm | 25 |
| Dimensions (H x W x D) | inch | 430 x 1140 x 1690 |
| Weight | kg | 84 |
| Power supply | V-ph-Hz | 220/240-1-50 |
| Duct diameter | mm | 200 |
| Operating range - around unit | °C | -10 to 40, RH ≤ 80% |
| Operating range - outdoor air | °C | -15 to 43, RH ≤ 80% |
| Operating range - return air | °C | 5 to 40, RH ≤ 80% |

Dimensional Drawings



Cool Designs Ltd

Raising the Standards in Air Conditioning Distribution

www.cdlweb.info

