

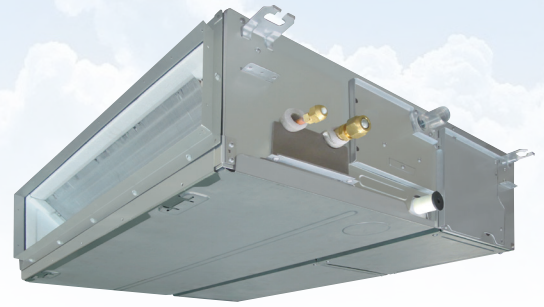
Toshiba Air Conditioning - RAV-SM Data Sheet

RAV-SM806BTP-E

Ducted

Features

- R22 and R407C replacement technology
- External static pressure can be raised up to 120 Pa
- Lift pump up to 850 mm lift or gravity drain
- Low noise: low fan speed down to 25 dB(A)
- Ideal for restricted ceiling voids only 275 mm high
- Base or rear return air with filter

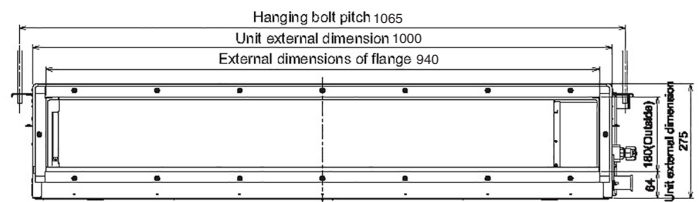
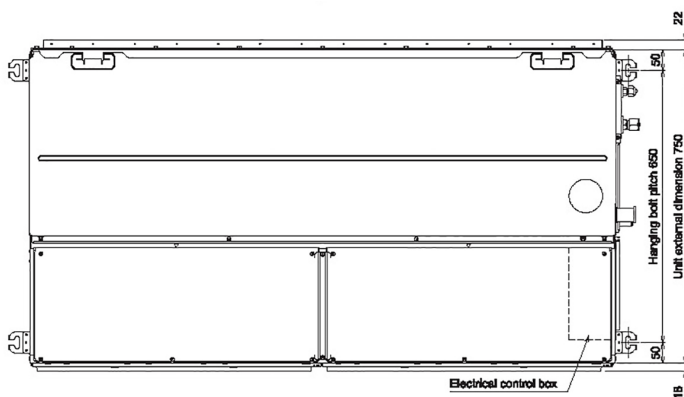


Technical Data

Model reference		RAV-SM806BTP-E
Nominal cooling	kW	6.7
Nominal heating	kW	8.0
Annual power consumption (SM/SP*)	kWh	1190/1030
UK cooling (SM/SP*)	kW	6.4/6.7
UK sensible cooling (SM/SP*)	kW	5.0/6.7
UK heating (SM/SP*)	kW	5.51/5.22
Starting current (SM/SP*)	A	1/1
Running current (SM/SP*)	A	11.65/10.30
Suggested fuse size (SM/SP*)	A	16/16
Power supply	V-ph-Hz	220/240-1-50
Interconnecting cable		3 core + earth
Sound power (high/low)	dB(A)	49/41
Sound pressure (high/low)	dB(A)	34/26
Air flow (high/low)	m ³ /h	1200/720
Air flow (high/low)	l/s	333/200
Dimensions (H x W x D)	mm	275 x 1000 x 750
Unit weight	kg	30
Energy label (cool/heat - SM/SP*)	V-ph-Hz	B/A - A+ / A+
EER/COP - SM/SP*		2.81/3.32 - 3.45/3.62
SEER/SCOP - SM/SP*		5.04/3.83 - 6.10/4.00
Pipe sizes (liquid-suction)	inch	3/8-5/8
External static pressure range (SM/SP*)	Pa	30-120/30-120

* Refers to outdoor combination SM = Digital Inverter SP = Super Digital Inverter

Dimensional Drawings



Cool Designs Ltd

Raising the Standards in Air Conditioning Distribution

www.cdlweb.info



All UK duties are based on Cooling Indoor air temperature 22 °C DB/16 °C WB Outdoor air temperature 28 °C DB 50% RH, high fan speed, 5 m pipe run.
 Heating Indoor air temperature 20 °C DB Outdoor air temperature -5 °C DB 100% RH, high fan speed, 5 m pipe run. Values are based on the maximum compressor output.
 Data obtained from Toshiba Air Conditioning Published Data September 2014.