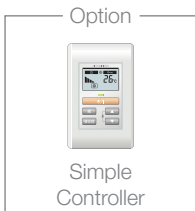
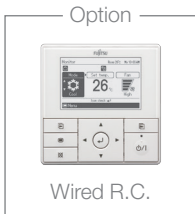


compact cassettes



Wireless R.C.



Incorporating the latest in design technology, Fujitsu cassette systems offer the optimum in air conditioning technology. The new fan design on the compact units ensures that the airflow is distributed evenly across the entire heat exchanger resulting in excellent system efficiencies and low noise levels.

- Nominal cooling: 3.50kW to 6.80kW (4 models)
- High SEER / SCOP Ratings
- Two stage turbo fan
- Ultra quiet
- Small, light, easy to install

Specifications

	Indoor	AUYG12LVLB	AUYG14LVLB	AUYG18LVLB	AUYG24LVLA
	Outdoor	AOYG12LALL	AOYG14LALL	AOYG18LALL	AOYG24LALA
Nominal Capacity (kW)	Cooling	3.50 (0.90-4.40)	4.30 (0.90-5.40)	5.20 (0.90-5.90)	6.80 (0.90-8.00)
	Heating	4.10 (0.90-5.70)	5.00 (0.90-6.50)	6.00 (0.90-7.50)	8.00 (0.90-9.10)
UK Total / Sensible Cooling *		3.46 / 2.37	3.96 / 2.70	4.79 / 3.09	5.94 / 4.42
Power Consumption (kW)	Cooling	1.05	1.33	1.62	2.21
	Heating	1.11	1.34	1.66	2.26
EER / COP (Nominal Conditions)		3.33 / 3.69	3.21 / 3.71	3.21 / 3.61	3.08 / 3.54
Pdesign (kW) @ -10°C	Cooling	3.50	4.30	5.20	6.80
	Heating	4.20	4.50	5.20	6.00
SEER	Cooling	6.20	6.40	6.20	5.60
SCOP	Heating (Average)	4.10	4.40	4.20	3.90
	Cooling	A++	A++	A++	A+
Energy Efficiency Class	Heating (Average)	A+	A+	A+	A
	Cooling	198	235	293	425
Annual Energy Consumption (kWh/a)	Heating	1431	1432	1731	2151
	Moisture Removal	l/h	1.20	1.50	2.20
Dimensions (HxWxD) mm	Inner (Ex. Grille)*	245x570x570	245x570x570	245x570x570	245x570x570
	Outer	578x790x300	578x790x300	578x790x300	578x790x315
Net Weight (kg)	Inner (Ex. Grille)*	15	15	15	16
	Outer	40	40	40	44
Room Air Circulation (high) m3/h	Inner	600	680	680	930
	Outer	1780	1910	2000	2470
Power Supply	V-PH-Hz	230 / 1 / 50	230 / 1 / 50	230 / 1 / 50	230 / 1 / 50
Power Supply To		Outdoor	Outdoor	Outdoor	Outdoor
Running Current (A)	Cooling	4.80	6.10	7.20	9.70
	Heating	5.10	6.10	7.40	9.90
Starting Current	A	5.10	6.10	7.40	9.90
Suggested MCB/Fuse	A	10	10	16	16
Interconnecting Cable		3 + E	3 + E	3 + E	3 + E
Remote Control Type		Wireless	Wireless	Wireless	Wireless
Sound Pressure (dB(A) Cooling)	Indoor Q/L/M/H	27 / 30 / 34 / 37	27 / 30 / 34 / 38	26 / 30 / 34 / 38	30 / 36 / 44 / 49
	Outdoor H	47	49	50	52
Sound Power (dB(A) Cooling)	Indoor H	49	50	50	59
	Outdoor H	61	62	62	67
Max Pipe Length	m	25	25	25	30
Max Height Difference	m	15	15	15	20
Refrigerant Charge	m	15	15	15	15
Additional Refrigerant Charge	g/m	20	20	20	20
Pipe Size (inches)	Gas	3/8 (9.52mm)	1/2 (12.7mm)	1/2 (12.7mm)	5/8 (15.88mm)
	Liquid	1/4 (6.35mm)	1/4 (6.35mm)	1/4 (6.35mm)	1/4 (6.35mm)
Operating Range °CDB	Cooling	-10 ~ 46	-10 ~ 46	-10 ~ 46	-10 ~ 46
	Heating	-15 ~ 24	-15 ~ 24	-15 ~ 24	-15 ~ 24
Refrigerant		R410A	R410A	R410A	R410A
Grille (to be ordered separately)		UTGUFYDW	UTGUFYDW	UTGUFYDW	UTGUFYDW

*Excludes Grille: Grille dimensions = 50x700x700, Grille weight = 2.6kg

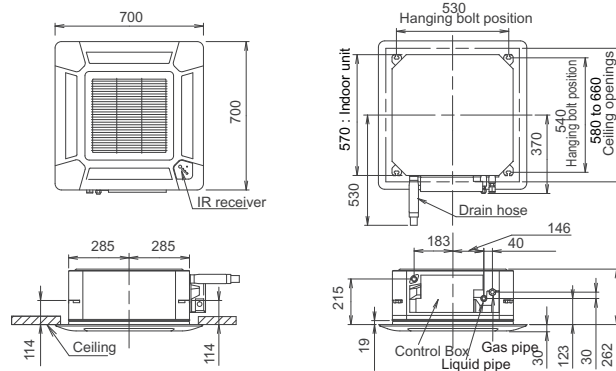
Optional Parts

Wired Remote Controller:	UTYRVNYM
Simple Remote Controller:	UTYRSNYM
Fresh Air Intake Kit	UTZVXAA
External Connect Kit	UTYXWZX
Modus Interface	FJRCMBS1
KNX Interface	FJRCKNX1
WiFi Interface	FJRCWIFI1

* UK Cooling: indoor temperature 23°CDB / 16°CWB and outdoor temperature 30°C

Dimensions Models : AUYG12LVLB / AUYG14LVLB / AUYG18LVLB / AUYG24LVLA

(Unit : mm)



The company reserves the right to make any variation in specification to the equipment described or to withdraw or replace products without prior notification or public announcement. All descriptions, illustrations, drawings and specifications in this publication present only general particulars and shall not form any part of any contract. All equipment and services are supplied subject to FG Eurofred's Terms and Conditions of Sale.

All prices shown exclude VAT.



Fujitsu air conditioning products are available from FG Eurofred and local distributors.

FUJITSU
AIR CONDITIONERS